

**Iowa Sire Profit Comparison Project
Ranking of Sires with 5 or more Progeny**



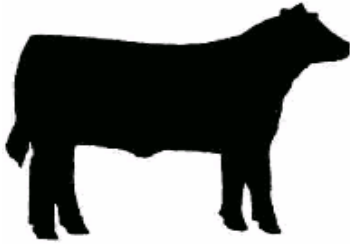
TCSCF
Tri-County Steer
Carcass
Futurity
Cooperative

In cooperation with



TriCounty Consignor or Bull Owner	Sire Name or ID Number	Low Ch-Sel Spread		High Ch-Sel Spread	
		Sire Effect on Profit	Within Breed Sire Rank	Sire Effect on Profit	Within Breed Sire Rank
Angus Sires					
McVae & David Wilt	Wilt New Design 591	\$151.77	2	\$153.36	1
Fall-Line Farms	12304120 G A R 6807 Traveler 4144	\$150.27	5	\$151.39	2
Scott Dougherty/Matthew Jones Farm/NW GA Research & Ed Ctr.	12455165 K C Prime Time 6029 95	\$149.81	6	\$150.78	3
Llangollen Farm	OT17	\$151.29	3	\$145.38	4
Joe & Judi Jones	176	\$150.72	4	\$145.09	5
Bar T Ranch/Bentley East	323	\$144.04	11	\$142.83	6
Trails End Farm/Nate/Larry Jones	12783796 Springfield 6148 6081	\$146.96	8	\$142.61	7
NW GA Research & Ed Center	13895274 King Kahn B100	\$149.36	7	\$142.43	8
Harris Livestock	B Bart	\$145.13	10	\$141.75	9
Rusty Thomson	24	\$156.22	1	\$141.50	10
Richard Crow	RR9191	\$138.90	19	\$141.44	11
Joe & Judi Jones	Spectrum	\$145.86	9	\$141.04	12
Cold Springs Angus Farm/Lakeview Farms Angus	13753258 Twin Valley 036 2400 G	\$141.46	14	\$140.04	13
Tim Sutphin	81	\$141.76	13	\$139.86	14
Larell Wilkinson	13677463 Ironwood Exacto S E 0344	\$143.34	12	\$139.01	15
Brian Hunt	V 8	\$139.62	17	\$134.73	16
Beaverdale Farm	13398404 H60 of 5304 GAR Commitment	\$139.80	16	\$131.92	17
Cold Springs Angus Farm/John Stuedeman/Fall-Line Farms	12350821 S A F 598 Bando 5175	\$140.98	15	\$130.42	18
Jim Husz	1149	\$128.52	26	\$129.11	19
Eddie Bradley	13754380 J K F Rito 00X4 of 4B47	\$132.06	22	\$128.07	20
Brian Hunt	9931	\$131.28	24	\$126.92	21
Rex Frieden	K739	\$138.95	18	\$125.99	22
Neil Crisp / Plumfield Farm	14203907 YON New Design M189	\$131.83	23	\$125.40	23
Eddie Bradley/Virginia Whitner/Sue Lewis/R	13254554 G A R Grid Maker	\$134.04	20	\$125.40	24
Oakalla Valley Partnership	13776378 S S Objective T510 OT26	\$126.36	30	\$123.86	25
Todd Dunphy	15	\$121.08	36	\$123.43	26
Warden & Richards	185	\$132.52	21	\$123.13	27
Rocky Creek Farms/ William Womack	13899796 R C F Traveler 234D 44E	\$123.38	32	\$121.37	28
Ricky Conner	13026574 Whitmire Big Dip 9461	\$128.84	25	\$121.09	29
Multiple Users	12564177 Bon View Spectrum 1176	\$117.16	41	\$119.73	30
Richard Crow	13626469 Rotert Checkmate 8021	\$121.70	35	\$119.72	31
David Loutzenhiser	39	\$126.86	29	\$119.29	32
Ron Dunphy	83	\$122.75	33	\$117.96	33
Bryan Hilsabeck	13930597 L C R Precision 101	\$119.35	38	\$117.72	34
Ron Dunphy	67	\$115.05	46	\$117.56	35
Warden & Richards	350	\$120.29	37	\$116.55	36
Turner Callaway	13353102 A Plus Prime 9070	\$122.23	34	\$115.38	37
Karl Kenagy	38	\$123.91	31	\$114.77	38
Lueken Angus Farm	12783540 Bon View New Design 1407	\$115.11	45	\$114.54	39
Lakeview Farms Angus	14139991 Hillside New Design 6475	\$115.45	43	\$114.19	40
William E. Hesper	HE	\$113.48	49	\$114.02	41
Brian Hunt	0.0281	\$127.86	27	\$113.99	42
Rocky Creek Farms/ William Womack	13629203 R C F Rito 8E8 2D	\$112.86	53	\$113.62	43
ABS	13062750 Bon View New Design 878	\$113.95	47	\$113.51	44
Joe Davis	1D4 West	\$117.72	40	\$113.14	45

**Iowa Sire Profit Comparison Project
Ranking of Sires with 5 or more Progeny**



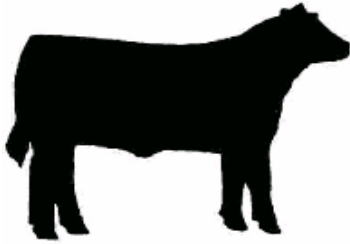
TCSCF
Tri-County Steer
Carcass
Futurity
Cooperative

In cooperation with



TriCounty Consignor or Bull Owner	Sire Name or ID Number	Low Ch-Sel Spread		High Ch-Sel Spread	
		Sire Effect on Profit	Within Breed Sire Rank	Sire Effect on Profit	Within Breed Sire Rank
Davis Angus Farm	CH	\$119.21	39	\$112.83	46
Frenchfield Farms	13264781 Rito 9W29 of 2G2 6148	\$113.46	50	\$112.55	47
Turner Callaway	12452829 B A R Ext Traveler 205	\$112.66	55	\$112.43	48
David Loutzenhiser	34	\$115.16	44	\$111.53	49
Alex Turner	13620887 Yon New Design 036 K45	\$111.31	57	\$110.59	50
McBee Angus	M148	\$104.14	68	\$109.48	51
Rocky Creek Farms	14179110 R C F Rock Ambush 53F	\$112.78	54	\$108.39	52
Multiple Users	12548568 G A R Expectation 4915	\$113.39	52	\$108.37	53
Joan Liebrecht	2900	\$115.48	42	\$107.24	54
Lawrence Risse/Granite Falls Farms	13947761 J T S Emuten Cornhusker 22S1	\$109.57	61	\$106.75	55
Rocky Creek Farms	14179145 R C F Rock Ambush 55F	\$110.44	60	\$106.13	56
Joe & Judi Jones	199	\$109.27	62	\$105.99	57
LaReil Wilkinson	366	\$108.69	63	\$105.72	58
Bar T Ranch/Bentley East	12808956 Black Crest Bando 104F Et	\$111.13	58	\$104.63	59
Bar W/Paul Wilkie	12745775 C A R Ext 739	\$100.80	81	\$104.00	60
Ray Copeland Farm	13320131 Ironwood N D 701 9377	\$112.31	56	\$103.81	61
Rocky Creek Farms/ William Womack	13629247 R C F Plowman 8D	\$113.46	51	\$103.32	62
Larry & Marlene James	13752759 Nichols Extra K337	\$110.51	59	\$103.28	63
Joey Link/Bishop Branch	1C3	\$102.43	75	\$101.86	64
McCord W Hall	12194989 Plowman 1627 of Millbrae SAR	\$103.56	71	\$101.77	65
Thomas Fulcher	12781911	\$104.86	65	\$101.62	66
Bar T Ranch/Will Taylor	9J20	\$113.64	48	\$101.44	67
Fulcher Family Farms	13291857 SHAF EXT Trav 6T6 038	\$103.88	69	\$101.13	68
Eddie Bradley	12655036 J F Traveler 5201	\$99.24	86	\$100.73	69
Harris Livestock	Meldon	\$104.69	66	\$100.60	70
McClure Farm	14133042 C C C Saugahatchee 095	\$104.19	67	\$100.32	71
Fulcher Family Farms	12781011 S H A F Ext RR TRV 446	\$101.95	78	\$100.17	72
Warden & Richards	Ironwood Cristo 6370 1101	\$100.56	82	\$98.99	73
Harris Livestock	13624705 W K U Doctor Pepper 0202	\$101.37	79	\$98.84	74
Massa Ranch/Darrell Kentner	13998979 Nichols Black Ink K691	\$102.78	74	\$98.73	75
Bar T Ranch	#3	\$98.52	89	\$98.69	76
Warden & Richards	Ironwood Cristo Pa 8223	\$96.57	93	\$98.62	77
Bishop Branch Farm/Joey Link	9I3	\$105.94	64	\$98.03	78
Brian Hunt	13985210 G A R New Design A651	\$99.89	83	\$98.00	79
Tommy Burns	13033529 Mills Illini 550	\$95.29	99	\$98.00	80
Brian Hunt	BYGO	\$99.14	88	\$97.21	81
Eddie Bradley	12306217 Rito 5TR8 of Rita 3X12 RRT	\$103.00	72	\$97.15	82
Gail & Marshall Miller	14387837 Nichols Ext M906	\$127.07	28	\$97.13	83
Home Park Farm/CR Conklin	476	\$100.82	80	\$95.91	84
Mill Creek Farms / Robert A. Phillips	MCF 2	\$102.86	73	\$95.16	85
Ancil Johnson	13692960 L F Traveler 016	\$95.52	97	\$95.03	86
NW GA Research & Ed Center	13857632 O A F Right Time 017 5260	\$103.68	70	\$94.75	87
Virginia Whitner/Sue Lewis/Eddie Bradley/B	12530601 Rito 616 of 4B20 6807	\$95.10	103	\$94.61	88
Archie Davis	11953035 K A F Max 307	\$98.27	90	\$93.97	89
Brian Hunt	Denny	\$99.73	85	\$93.91	90
Brian Hunt	V8	\$102.19	76	\$93.73	91
Joe & Judi Jones	23	\$97.65	91	\$93.67	92
Abingdon Feeder Cattle Association/Anson Minton	13906641 Echo Ridge Rito 9K60 7931	\$95.16	101	\$93.54	93
NW GA Research & Ed Center	13979570 Kahn Ambush B126	\$96.12	95	\$93.48	94

**Iowa Sire Profit Comparison Project
Ranking of Sires with 5 or more Progeny**



TCSCF
Tri-County Steer
Carcass
Futurity
Cooperative

In cooperation with



TriCounty Consignor or Bull Owner	Sire Name or ID Number	Low Ch-Sel Spread		High Ch-Sel Spread	
		Sire Effect on Profit	Within Breed Sire Rank	Sire Effect on Profit	Within Breed Sire Rank
Tommy Jack Shoun	13817463 M M Stockman 365-5265	\$95.26	100	\$92.62	95
NW GA Research & Ed Ctr.	8610	\$95.03	104	\$91.88	96
Warden & Richards	Ironwood Cristo B2 8218	\$96.61	92	\$91.52	97
David Loutzenhiser	4060	\$94.57	105	\$91.48	98
Brian Hunt	13171041 Windy Knob Halfback J6	\$92.11	111	\$91.48	99
Brian Hunt	A651	\$93.45	108	\$91.33	100
Joe Griffith	12717609 R L C Mr Trend 581	\$99.24	87	\$90.70	101
Clathworthy Farms/Alex Turner	14167150 Turner Ideal 0104	\$88.12	120	\$90.37	102
NW GA Research & Ed Ctr.	13524075 Cpes Triple Threat 9601	\$95.87	96	\$90.07	103
Archie Davis	13209907 Davis New Design 902	\$94.13	106	\$89.72	104
Rosenbaum Farms/Gregory	442	\$94.07	107	\$89.60	105
NW GA Research & Ed Center	13575673 WAF 9M9 690	\$93.24	110	\$89.57	106
Donald Davies	DF LIBERTY PLUS	\$91.71	112	\$89.06	107
NW GA Research & Ed Ctr.	13348824 WAF 556 West 649	\$99.80	84	\$89.00	108
Brian Hunt	Bubba	\$95.11	102	\$88.56	109
Douglas Angus/ Don Douglas	13677917 M A R Sitz Rainmaker 0066	\$89.02	118	\$88.47	110
Oakalla Valley Partnership	12616282 Dipert W W Rito 328-603	\$93.36	109	\$87.80	111
Davis Angus Farm	DM	\$91.12	114	\$87.63	112
Larell Wilkinson	14031322 LCW Majestic Design 715-L42	\$102.07	77	\$87.44	113
Archie Davis	12613103 Davis Maximum 607	\$90.49	115	\$86.46	114
Roger McMartin	7527	\$86.53	125	\$86.29	115
Davies Farms	GAR westwind 7966	\$86.95	122	\$85.73	116
Eddie Bradley	13071562 Baf Roller 8321	\$88.83	119	\$85.52	117
Brian Hunt	13460439 Low Gap Royal 38 W W 027	\$90.04	116	\$85.32	118
Larell Wilkinson	13320122 Ironwood Stampede2 9366	\$89.76	117	\$85.13	119
Bart Renkoski	#6	\$91.19	113	\$85.13	120
Davis Angus Farm	DND	\$86.82	123	\$83.43	121
L.C. Curtis & Son, Inc.	11848995 Bridges Nugget 3133	\$77.97	140	\$83.42	122
Brian Hunt	WR	\$88.07	121	\$83.32	123
David L. Gardner	14184091 Echo Ridge Grid Maker 8002	\$95.51	98	\$83.01	124
Spring Creek Cattle Co.	12669673 Mill Coulee ZZZ 615	\$83.74	130	\$82.90	125
Ron Dunphy	106	\$96.44	94	\$82.50	126
Kathleen Haddon	13651565 Black Crest Consensus 72K	\$79.94	137	\$81.35	127
Kathleen Haddon	13899513 YON Right Time L217	\$84.45	129	\$81.34	128
L. C. Curtis & Son, Inc.	12167046 Bridges Executive 4045	\$79.99	136	\$80.39	129
Rocky Creek Farms/ William Womack	13109114 R C F Max X77 51B	\$86.36	126	\$80.35	130
David Loutzenhiser	732	\$85.10	127	\$79.92	131
Martin Livestock/Russ Massa	F36	\$83.30	131	\$78.03	132
Oakalla Valley Partnership	13333313 S A F 013 Transform 8284	\$76.81	144	\$77.94	133
Oakalla Valley Partnership	12668686 Mill Coulee Rito Max 613	\$76.34	146	\$77.92	134
NW GA Research & Ed Center	13952523 Kahn Broadband R A 94L	\$84.97	128	\$77.46	135
Tom Merritt	13139311 M A F T C Traveler 658	\$80.14	135	\$77.16	136
Davis Angus Farm	DM40	\$80.27	134	\$76.99	137
Wagon Wheel Ranch/Fred Liebl	12615702 U G Rito Max 6589	\$77.05	142	\$75.81	138
Oakalla Valley Partnership	13339466 S A F Diversity 9197	\$82.74	133	\$75.66	139
Warden & Richards	13632482 PAA Pharlap A18	\$71.49	156	\$75.54	140
Oakalla Valley Partnership	13308736 S A F Focus 8259	\$77.07	141	\$75.39	141
NW GA Research & Ed Ctr.	13532852 Crestview Scotch Cap 9M9 833	\$68.60	157	\$73.90	142
Davis Angus Farm	DT25	\$76.93	143	\$73.79	143
Home Park Farm/CR Conklin	426	\$75.25	148	\$73.09	144

**Iowa Sire Profit Comparison Project
Ranking of Sires with 5 or more Progeny**



TCSCF
Tri-County Steer
Carcass
Futurity
Cooperative

In cooperation with



TriCounty Consignor or Bull Owner	Sire Name or ID Number	Low Ch-Sel Spread		High Ch-Sel Spread	
		Sire Effect on Profit	Within Breed Sire Rank	Sire Effect on Profit	Within Breed Sire Rank
NW GA Research & Ed Center	14138699 Bricton Traveler 1221	\$82.88	132	\$73.05	145
South Ozarks Premier Beef Marketers, LLC	Really Windy	\$73.02	152	\$72.90	146
4R Cattle Co.	RTL	\$86.61	124	\$71.45	147
Archie Davis	12022688 Davis Bold Scotch 467	\$78.87	138	\$71.02	148
Webb Davis	WW	\$72.76	153	\$69.62	149
Ben Lindsey Farms	13502354 C F Timely 28	\$76.57	145	\$69.34	150
NW GA Research & Ed Center	13611189 WAF 9M9 990	\$73.08	151	\$68.67	151
Brian Hunt	SUNUP	\$75.49	147	\$68.11	152
Fulcher Family Farms	12961867 H G Traveler Ext 727	\$74.16	150	\$68.08	153
Davis Angus Farm	BC	\$72.14	154	\$67.75	154
Gail & Marshall Miller	14378871 Nichols Ext M917	\$64.45	164	\$66.91	155
LC Curtis & Son	13810051 BAF Emulous 0142 2058 7072	\$68.38	159	\$66.63	156
Joe Griffith	13402927 W A F Rito 924 of 210	\$74.80	149	\$66.37	157
Dwight Watson	14243754 BoPat Extra 291	\$62.40	165	\$65.54	158
Brian Hunt	38 BULL	\$72.12	155	\$65.24	159
Julian & Patti Price	T	\$78.42	139	\$63.54	160
Brent Hanshaw	13769607 Nichols Performa K463	\$66.55	162	\$62.59	161
Rosenbaum Farms	2	\$68.36	160	\$62.33	162
Eddie Bradley	13633273 D W Bar EXT 013D	\$47.64	180	\$61.73	163
Brian Hunt	Bullet	\$61.87	167	\$60.37	164
Tommy Jack Shoun	Freightliner	\$68.56	158	\$60.13	165
Larell Wilkinson	13677471 Ironwood Stampede 036 0355	\$58.97	168	\$59.72	166
NW GA Research & Ed Ctr.	13535909 Cpes Schurrtop Supreme 9629	\$65.52	163	\$59.67	167
Bar T Ranch/Bentley East	W841	\$57.44	169	\$58.00	168
Bar T Ranch/Bentley East	OO7	\$56.52	171	\$56.83	169
Bar T Ranch/Bentley East	13802817 Yon Hi Spade 039 K74	\$68.32	161	\$56.42	170
Charles Rosenkrans	14006798 Martin Summit Traveler 2005	\$55.69	172	\$54.18	171
Ben Lindsey Farms	13117982 Double O Transformer 802	\$57.43	170	\$53.95	172
B.R. Haddon	4	\$51.50	177	\$52.08	173
L.C. Curtis & Son, Inc.	13095735 Bridges Resolution 7007	\$55.48	173	\$50.06	174
Lowell Andersen	13665067 Prairiedge Absolute 023	\$53.07	175	\$49.66	175
NW GA Research & Ed Center	13412015 Ug Enhancer 9551	\$54.64	174	\$47.97	176
Brian Hunt	Byrego	\$52.90	176	\$46.28	177
McCord W Hall	10776479 N Bar Emulation EXT	\$49.99	178	\$45.31	178
Brian Hunt	Average	\$49.27	179	\$44.61	179
LaReil Wilkinson	13	\$44.57	183	\$43.80	180
LC Curtis & Son	12499216 M H B Oliver of Z 145	\$46.03	182	\$43.02	181
L. C. Curtis & Son, Inc.	13425355 Ug Traveler 8180 8640	\$35.09	187	\$41.56	182
Eddie Bradley	11933313 Rito 2E82 of 7S11 Traveler	\$62.11	166	\$41.28	183
Jason Peters	13758082 P A A 3113 Northlander 0028	\$42.98	184	\$40.67	184
NW GA Research & Ed Center	102	\$46.67	181	\$38.85	185
Tom Merritt	13069686 B A F Ext 1187	\$35.54	185	\$34.73	186
Bruce Brae GA/RR Bruce	13545243 Daltons Explorer 026	\$35.33	186	\$34.10	187
Archie Ladd	137981469)	\$26.79	188	\$19.20	188
Holton Farms	13752972 Winns Bandolier 700	\$19.96	189	\$14.16	189
Pomp Berger/Weaver L. Forest	Nick	\$4.82	192	\$4.97	190
Ed Wiederstein	Circle Oak	\$0.00	193	\$4.07	191
Davis Angus Farm	K	\$4.95	191	\$3.44	192
Steve James	13877830 U T P Bextor 2171	\$12.23	190	(\$0.00)	193

Iowa Sire Profit Comparison Project
Ranking of Sires with 5 or more Progeny



TCSCF
Tri-County Steer
Carcass
Futurity
Cooperative

In cooperation with



TriCounty Consignor or Bull Owner	Sire Name or ID Number	Low Ch-Sel Spread		High Ch-Sel Spread	
		Sire Effect on Profit	Within Breed Sire Rank	Sire Effect on Profit	Within Breed Sire Rank
Ankina Sires					
Brent Hanshaw	ANK463	\$110.33	1	\$118.80	1
Red Angus Sires					
Robert Stauber	83	\$17.32	1	\$18.23	1
Julian & Patti Price	J7	\$11.27	2	\$6.17	2
JanBil Farms	LS067	\$4.54	3	\$4.02	3
JanBil Farms	Chercan4912	\$0.00	4	\$0.00	4
Balancer Sires					
Smith Farm	758391	\$9.61	1	(\$0.60)	1
Beef Friesian Sires					
Joan Liebrecht	BF	(\$0.50)	1	(\$6.29)	1
Beefmaster Sires					
George Haddon	227	\$2.15	1	\$2.56	1
B.R., Kathleen, George Haddon	G622	\$0.00	2	\$0.00	2
Brangus Sires					
Bar T Ranch	706776	\$112.21	1	\$96.01	1
Joe Davis	L106	\$0.00	2	\$0.00	2
Charolais Sires					
Forrest & Donna Thompson	#20	\$171.95	1	\$181.32	1
Bart Renkoski	462334 ACE MR UNLTD G81 P	\$104.98	3	\$113.21	2
MBS Charolais	T150	\$118.71	2	\$109.05	3
Joan Liebrecht	FEMO	\$79.31	4	\$87.98	4
Tommy Jack Shoun	M624911 VPI PRIME DUKE 2114	\$70.52	5	\$79.94	5
Lewis Farms/Bentley East	3336	\$55.88	7	\$73.87	6
Breezy Heights Charolais	M491427 SCF CUJO	\$59.41	6	\$61.73	7
Harmon Charolais	M510136 AC JUMBO DUKE 907	\$0.00	8	\$0.00	8
Composite Sires					
JanBil Farms	Stabilizer	\$12.40	1	\$14.51	1
Rocky Rush	759953 LJR N23	\$0.00	2	\$0.00	2
South Devon Sires					
Joe & Judi Jones	69A	\$30.71	1	\$30.95	1
Gelbvieh Sires					
Joe & Judi Jones	37A	\$136.87	1	\$130.81	1
Ron Penton	2H	\$133.78	2	\$121.10	2
C W Senn/Bentley East	Average	\$128.87	3	\$120.29	3
Jack McCauley/Bentley East	10	\$114.35	5	\$110.21	4
Bar T Ranch	DANNY	\$115.66	4	\$106.04	5
Fulcher Family Farms	609811	\$110.71	6	\$102.83	6
Joan Liebrecht	313	\$102.80	7	\$88.78	7
Ron & Tim Dunphy	G	\$90.04	9	\$83.76	8
Joan Liebrecht	BG	\$91.23	8	\$76.42	9
Todd Dunphy	13	\$62.57	15	\$61.57	10
Gary Martens	84H	\$72.17	10	\$61.26	11
South Ozarks Premier Beef Marketers, LLC/ Brent Lorimor	51K	\$68.33	11	\$58.51	12

**Iowa Sire Profit Comparison Project
Ranking of Sires with 5 or more Progeny**



TCSCF
Tri-County Steer
Carcass
Futurity
Cooperative

In cooperation with



TriCounty Consignor or Bull Owner	Sire Name or ID Number	Low Ch-Sel Spread		High Ch-Sel Spread	
		Sire Effect on Profit	Within Breed Sire Rank	Sire Effect on Profit	Within Breed Sire Rank
Todd Dunphy	10	\$63.14	13	\$57.29	13
Tim Dunphy	Echo	\$62.41	16	\$56.18	14
South Ozarks Premier Beef Marketers, LLC/ Brent Lorimor	Lil G	\$62.61	14	\$45.71	15
Stonegate Farm	653645	\$64.64	12	\$42.58	16
Rusty Thomson/Bentley East	25	\$0.00	17	\$0.00	17
Hereford Sires					
Jim McClure	P41105040 SHR F6 MR SAUTEE 19J	\$87.77	1	\$88.32	1
NW GA Research & Ed Ctr	C821	\$83.96	2	\$82.45	2
Julian & Patti Price	454	\$83.67	3	\$82.30	3
Forrest Polled Herefords	K58	\$71.34	4	\$75.46	4
Forrest Polled Herefords	S14	\$56.77	5	\$63.37	5
Stonegate Farm	P41140930 NT PLATO 19 207	\$55.48	6	\$56.14	6
Dave Spark	057J	\$53.25	7	\$48.98	7
Innisfail Farm	42237827 INNISFAIL 235 12L	\$46.12	8	\$47.69	8
NW GA Research & Ed Ctr	W-FIRE	\$37.58	10	\$43.71	9
Maple Springs Farm	9H	\$32.64	12	\$34.22	10
Forrest Polled Hereford	8044	\$33.72	11	\$33.90	11
NW GA Research & Ed Ctr	HP835	\$23.29	13	\$21.05	12
NW GA Research & Ed Ctr	HH295	\$14.64	15	\$14.96	13
NW GA Research & Ed Ctr	28HH0712	\$37.79	9	\$14.83	14
Bar T Ranch/Bentley East	P42282201 FPH HITTER 4007 L61	\$23.02	14	\$14.67	15
Maple Springs Farm	K67	\$6.45	18	\$9.54	16
Matthew Jones Farm	P41121960 CES VICTOR 4009 X240	\$12.34	16	\$7.19	17
Forrest Polled Herefords	F35	\$0.00	19	\$1.11	18
Dave Spark	991	\$6.74	17	\$0.00	19
Limousin Sires					
Sanders Farms	Lim	\$65.50	1	\$65.95	1
Salers Sires					
Ridgetop Salers	31J	\$0.00	2	\$0.00	2
Ridgetop Salers	Apo	\$145.58	1	\$167.31	1
Shorthorn Sires					
Karl Kenagy	4043048 SSC CLYDE	\$85.80	\$ 1.00	\$74.68	1
Tom Enarson	B	\$65.14	2	\$70.22	2
Simmental-Angus Sires					
Donald Davies	49K	\$56.57	1	\$61.96	1
Donald Davies	SXL	\$29.33	3	\$31.85	2
Massa Ranch	M 920	\$39.44	2	\$28.16	3
Donald Davies	7L	\$28.45	4	\$25.78	4
Davies Farms	SX SIM CROSS	\$21.24	5	\$19.91	5
Donald Davies	SX	\$13.32	6	\$15.30	6
Rosenbaum Farms/Gregory	Larry	\$0.00	7	\$0.00	7
Simmental Sires					
Tennessee Tech Univ.	129	\$140.01	2	\$142.53	1
Dean McKibben	2148591 M32	\$143.87	1	\$140.73	2
Donald Davies	ONE EYE JACK	\$126.85	3	\$126.19	3
McCord W Hall	1958410 GW LUCKY STRIKE 147G	\$110.38	6	\$113.57	4

**Iowa Sire Profit Comparison Project
Ranking of Sires with 5 or more Progeny**



TCSCF
Tri-County Steer
Carcass
Futurity
Cooperative

In cooperation with



TriCounty Consignor or Bull Owner	Sire Name or ID Number	Low Ch-Sel Spread		High Ch-Sel Spread	
		Sire Effect on Profit	Within Breed Sire Rank	Sire Effect on Profit	Within Breed Sire Rank
Joe & Judi Jones	56	\$111.21	5	\$110.00	5
JanBil Farms	Jalapena	\$107.26	8	\$108.61	6
Donald Davies	TE IRISH STOCKMAN H3	\$108.94	7	\$107.78	7
Stephen Turner/Steve Jones	Legacy	\$112.30	4	\$104.85	8
Rosenbaum Farms/Gregory	21	\$89.56	10	\$94.16	9
Jerry Graybeal	#3 Dale	\$87.69	11	\$90.66	10
John & Janet Massey	2023886 PVF H90	\$93.65	9	\$88.91	11
Davies Farms	MD MISTER DIAMOND	\$85.35	13	\$86.87	12
Wolf Creek Farms	1886735 H-HS JACOB	\$87.32	12	\$82.13	13
Rosenbaum Farms/Gregory	JDJ	\$78.38	15	\$78.58	14
William E. Heser	Bond	\$82.80	14	\$77.46	15
Donald Davies	JOURNEYMAN	\$66.17	17	\$62.33	16
John Bauer	J68	\$66.72	16	\$61.86	17
Jim Wallick	23	\$53.59	19	\$54.56	18
William E. Heser	Clif	\$45.29	20	\$51.85	19
Emerald J Farms	1759412 JNA GUNS BLACK ASSASSIN	\$63.88	18	\$51.76	20
Marty Bunton	G270	\$32.08	22	\$32.79	21
David L. Gardner	MF 55K RE	\$43.21	21	\$31.43	22
Sean & Lynn Parker	2054992 DORA LEE RED KNIGHT	\$8.00	23	\$1.29	23
Mike, Seth & Trish Huffman	Ivomec	\$0.00	24	\$0.00	24
Tarentaise Sires					
Leonard Sheriff	203995	\$30.10	1	\$49.97	1