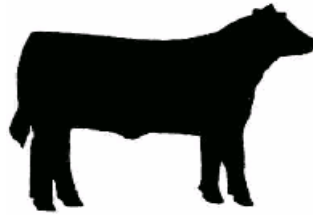


**2005 Iowa Sire Profit Comparison Project
Progeny Averages on Sires with 5 Head or more**

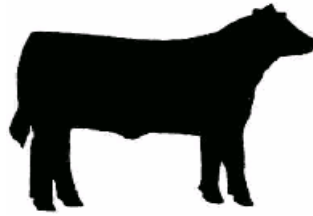


TCSCF
Tri-County Steer
Carcass
Futurity
Cooperative



TriCounty Consignor or Bull Owner	Sire Name or ID Number	Progeny Number	Adj Final Wt.	Ave. Disp. Score	Feed to Gain	Overall ADG	Hot Carcass Wt.	Dress %	Fat Cover	Ribeye Area	Yield Grade	% Low Choice or better	% Upper 2/3s Choice or better	Ind. Health Trts. Cost	SPA Calf Value
Angus Sires															
McVae & David Wilt	Wilt New Design 591	5	1235	1.3	6.83	3.45	759	61.5%	0.50	12.78	2.92	100.0%	40.0%	\$0.00	\$400.67
Fall-Line Farms	12304120 G A R 6807 Traveler 4144	6	1179	1.4	7.13	3.09	723	61.3%	0.44	12.50	2.80	100.0%	0.0%	\$9.79	\$400.64
Scott Dougherty/Matthew Jones Farm/NW GA Research & Ed Ctr.	12455165 K C Prime Time 6029 95	6	1294	1.5	6.94	3.69	796	61.5%	0.47	12.97	2.98	100.0%	33.3%	\$0.00	\$401.52
Llangollen Farm	OT17	7	1329	1.1	6.75	4.18	826	62.2%	0.48	12.59	3.41	100.0%	71.4%	\$0.00	\$443.71
Joe & Judi Jones	176	16	1116	1.5	6.71	3.39	697	62.5%	0.46	12.18	2.86	100.0%	56.3%	\$2.57	\$371.39
Bar T Ranch/Bentley East	323	8	1144	1.5	6.60	3.36	713	62.4%	0.43	12.66	2.71	100.0%	12.5%	\$0.00	\$361.32
Trails End Farm/Nate/Larry Jones	12783796 Springfield 6148 6081	25	1109	1.6	7.52	2.95	685	61.3%	0.44	11.91	2.80	95.7%	60.9%	\$2.85	\$389.81
NW GA Research & Ed Center	13895274 King Kahn B100	20	1188	1.3	6.97	3.40	729	61.3%	0.48	12.77	2.83	85.0%	0.0%	\$0.63	\$406.64
Harris Livestock	B Bart	6	1266	1.5	6.13	4.25	780	61.6%	0.43	13.22	2.91	100.0%	83.3%	\$0.33	\$390.21
Joe & Judi Jones	23	9	1119	1.2	6.43	3.29	681	60.9%	0.46	11.68	2.99	100.0%	77.8%	\$0.00	\$366.23
Rusty Thomson	24	5	1308	1.2	6.81	3.78	813	62.2%	0.37	14.20	2.41	60.0%	0.0%	\$0.00	\$452.46
Richard Crow	RR9191	10	1214	1.7	7.64	2.95	758	62.4%	0.47	12.04	3.15	100.0%	55.6%	\$8.55	\$454.04
Joe & Judi Jones	Spectrum	6	1138	1.2	6.55	3.39	686	60.4%	0.49	12.48	2.79	100.0%	100.0%	\$2.93	\$357.84
Cold Springs Angus Farm/Lakeview Farms Angus	13753258 Twin Valley 036 2400 G	18	1240	1.1	6.65	3.53	769	62.0%	0.47	12.97	2.94	100.0%	72.2%	\$5.91	\$393.78
Tim Sutphin	81	5	1368	1.2	6.45	3.88	839	61.2%	0.54	13.20	3.23	100.0%	40.0%	\$0.00	\$443.61
Larell Wilkinson	13677463 Ironwood Exacto S E 0344	6	1230	1.4	6.37	3.65	781	63.6%	0.53	12.45	3.33	100.0%	33.3%	\$0.00	\$406.23
Brian Hunt	V 8	8	1248	1.5	7.33	3.55	752	60.2%	0.44	11.68	3.06	100.0%	75.0%	\$5.79	\$393.05
Beaverdale Farm	13398404 H60 of 5304 GAR Commitment	12	1230	1.6	6.58	3.29	766	62.3%	0.40	13.33	2.57	91.7%	16.7%	\$5.83	\$389.50
Cold Springs Angus Farm/John Stuedeman/Fall-Line Farms	12350821 S A F 598 Bando 5175	9	1264	1.3	7.42	3.41	777	61.5%	0.47	12.86	2.96	66.7%	33.3%	\$23.64	\$430.17
Jim Husz	1149	5	1261	1.3	6.55	3.39	777	61.6%	0.48	12.88	3.03	100.0%	40.0%	\$0.00	\$420.30
Eddie Bradley	13754380 J K F Rito 00X4 of 4B47	5	1159	1.2	7.82	2.60	715	61.6%	0.43	12.76	2.67	80.0%	60.0%	\$20.87	\$423.29
Brian Hunt	9931	8	1164	1.7	6.72	3.36	719	61.8%	0.43	11.93	3.04	100.0%	75.0%	\$0.00	\$389.82
Rex Frieden	K739	7	1224	1.6	7.31	2.95	772	63.1%	0.41	12.99	2.65	57.1%	0.0%	\$0.00	\$452.69
Neil Crisp / Plumfield Farm	14203907 YON New Design M189	18	1190	1.5	7.29	3.12	725	61.0%	0.38	12.57	2.61	94.4%	44.4%	\$0.00	\$416.96
Eddie Bradley/Virginia Whitner/Sue Lewis/Rocky Creek Farms	13254554 G A R Grid Maker	19	1252	1.3	6.87	3.42	767	61.2%	0.47	13.44	2.74	73.7%	5.3%	\$9.41	\$416.77
Oakalla Valley Partnership	13776378 S S Objective T510 OT26	9	1171	1.4	7.46	3.28	721	61.5%	0.42	12.19	2.78	100.0%	44.4%	\$1.61	\$403.99
Todd Dunphy	15	7	1244	1.5	6.53	3.33	778	62.5%	0.56	12.67	3.25	100.0%	71.4%	\$26.67	\$372.24
Warden & Richards	185	5	1144	2.0	6.90	3.46	723	63.1%	0.53	12.38	3.07	80.0%	60.0%	\$0.62	\$365.28
Rocky Creek Farms/ William Womack	13899796 R C F Traveler 234D 44E	9	1151	1.5	6.47	3.41	714	62.0%	0.43	12.41	2.82	100.0%	77.8%	\$0.00	\$358.00
Ricky Conner	13026574 Whitmire Big Dip 9461	6	1283	1.3	7.38	2.98	803	62.6%	0.48	12.73	3.10	83.3%	16.7%	\$0.00	\$431.05
Multiple Users	12564177 Bon View Spectrum 1176	16	1148	1.3	7.29	2.88	710	61.8%	0.48	11.85	3.06	100.0%	31.3%	\$6.26	\$383.49
Richard Crow	13626469 Rotert Checkmate 8021	10	1215	1.7	8.24	2.98	746	61.4%	0.40	12.57	2.80	57.1%	28.6%	\$0.00	\$431.87
David Loutzenhiser	39	22	1190	1.4	6.50	3.22	739	62.1%	0.43	12.83	2.85	86.4%	36.4%	\$0.00	\$372.32
Ron Dunphy	83	15	1172	1.7	6.34	3.12	727	62.0%	0.37	12.69	2.60	73.3%	0.0%	\$12.74	\$348.55
Bryan Hilsabeck	13930597 L C R Precision 101	5	1260	1.3	6.35	3.90	781	62.0%	0.51	12.70	3.30	100.0%	20.0%	\$0.62	\$404.48
Ron Dunphy	67	6	1178	1.7	6.24	2.96	717	60.8%	0.33	12.95	2.36	100.0%	33.3%	\$31.02	\$347.67
Warden & Richards	350	10	1181	2.4	6.58	3.98	723	61.2%	0.55	11.94	3.18	90.0%	10.0%	\$0.31	\$355.24
Turner Callaway	13353102 A Plus Prime 9070	17	1155	1.1	6.19	3.43	710	61.5%	0.36	12.29	2.50	82.4%	35.3%	\$0.00	\$356.11
Karl Kenagy	38	6	1329	1.6	6.87	3.75	817	61.3%	0.45	13.28	2.89	83.3%	0.0%	\$0.00	\$426.86
Lueken Angus Farm	12783540 Bon View New Design 1407	5	1214	1.1	7.53	3.35	740	61.0%	0.55	12.76	3.04	100.0%	40.0%	\$0.00	\$421.60

**2005 Iowa Sire Profit Comparison Project
Progeny Averages on Sires with 5 Head or more**



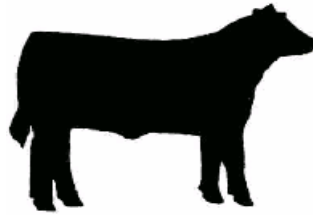
TCSCF
Tri-County Steer
Carcass
Futurity
Cooperative



In cooperation with

TriCounty Consignor or Bull Owner	Sire Name or ID Number	Progeny Number	Adj Final Wt.	Ave. Disp. Score	Feed to Gain	Overall ADG	Hot Carcass Wt.	Dress %	Fat Cover	Ribeye Area	Yield Grade	% Low Choice or better	% Upper 2/3s Choice or better	Ind. Health Trts.	SPA Calf Value
Lakeview Farms Angus	14139991 Hillside New Design 6475	7	1235	1.3	6.18	3.82	751	60.8%	0.49	12.40	3.19	100.0%	71.4%	\$0.00	\$346.96
William E. Heser	HE	9	1059	1.5	6.59	2.96	647	61.1%	0.52	11.76	2.92	100.0%	44.4%	\$3.33	\$328.38
Brian Hunt	0.0281	6	1200	1.8	6.52	3.62	743	61.9%	0.45	12.65	2.98	83.3%	16.7%	\$0.00	\$391.34
Rocky Creek Farms/ William Womack	13629203 R C F Rito 8E8 2D	11	1204	1.3	6.40	3.77	735	61.1%	0.51	12.04	3.14	100.0%	45.5%	\$12.05	\$358.67
ABS	13062750 Bon View New Design 878	23	1183	1.6	6.91	3.42	727	61.5%	0.49	12.20	3.03	95.7%	30.4%	\$0.75	\$390.30
Joe Davis	1D4 West	5	1038	1.3	6.89	3.07	645	62.2%	0.44	12.02	2.57	100.0%	60.0%	\$0.00	\$368.23
Davis Angus Farm	CH	13	1049	1.3	7.02	2.89	662	61.7%	0.33	12.43	2.26	91.7%	25.0%	\$0.92	\$355.59
Frenchfield Farms	13264781 Rito 9W29 of 2G2 6148	23	1208	1.1	6.64	3.47	738	61.0%	0.47	12.73	2.83	82.6%	4.3%	\$4.56	\$432.71
Turner Callaway	12452829 B A R Ext Traveler 205	14	1184	1.1	6.65	3.42	726	61.4%	0.46	11.89	2.99	100.0%	42.9%	\$0.00	\$379.42
David Loutzenhiser	34	18	1109	1.6	6.69	3.14	677	61.1%	0.48	11.85	2.96	100.0%	44.4%	\$0.28	\$345.00
Alex Turner	13620887 Yon New Design 036 K45	6	1106	1.3	6.80	3.27	670	60.6%	0.47	12.82	2.58	100.0%	33.3%	\$0.00	\$370.07
McBee Angus	M148	7	1118	1.6	6.96	3.07	675	60.4%	0.39	12.20	2.47	85.7%	57.1%	\$20.99	\$395.27
Rocky Creek Farms	14179110 R C F Rock Ambush 53F	6	1206	1.4	6.34	3.79	742	61.5%	0.51	12.75	3.04	100.0%	83.3%	\$3.00	\$343.42
Multiple Users	12548568 G A R Expectation 4915	62	1225	1.5	6.70	3.57	756	61.7%	0.43	12.44	2.98	88.5%	29.5%	\$1.56	\$397.58
Joan Liebrecht	2900	14	1260	1.5	7.99	3.15	771	61.1%	0.41	12.84	2.78	71.4%	35.7%	\$6.11	\$457.67
Lawrence Risse/Granite Falls Farms	13947761 J T S Emuten Cornhusker 22S1	9	1128	1.4	7.93	2.62	701	62.1%	0.50	12.34	2.83	88.9%	33.3%	\$10.57	\$410.42
Rocky Creek Farms	14179145 R C F Rock Ambush 55F	5	1156	1.5	6.27	3.61	700	60.5%	0.38	12.30	2.77	100.0%	40.0%	\$0.00	\$346.62
Joe & Judi Jones	199	7	1099	1.1	5.78	3.31	686	62.3%	0.43	12.29	2.75	100.0%	57.1%	\$0.00	\$350.00
LaRell Wilkinson	366	6	1283	1.3	6.86	4.14	780	60.8%	0.59	12.68	3.28	100.0%	40.0%	\$6.42	\$421.59
Bar T Ranch/Bentley East	12808956 Black Crest Bando 104F Et	11	1281	1.8	7.52	3.17	796	62.2%	0.53	12.67	3.28	80.0%	10.0%	\$0.00	\$422.60
Bar W/Paul Wilkie	12745775 C A R Ext 739	10	1065	1.3	6.79	3.40	661	62.1%	0.41	11.36	2.79	100.0%	70.0%	\$0.00	\$377.70
Ray Copeland Farm	13320131 Ironwood N D 701 9377	11	1250	1.3	7.54	3.34	769	61.5%	0.51	13.19	2.89	81.8%	9.1%	\$0.00	\$419.52
Rocky Creek Farms/ William Womack	13629247 R C F Plowman 8D	7	1228	1.2	6.45	3.58	755	61.6%	0.41	12.53	2.78	100.0%	45.5%	\$16.87	\$383.85
Larry & Marlene James	13752759 Nichols Extra K337	7	1247	1.2	6.34	3.20	767	61.6%	0.33	13.71	2.30	20.0%	0.0%	\$7.46	\$382.07
Joey Link/Bishop Branch	1C3	10	1182	1.3	7.08	3.01	726	61.5%	0.42	11.50	3.05	77.8%	22.2%	\$22.90	\$401.72
McCord W Hall	12194989 Plowman 1627 of Millbrae SAR	18	1273	1.3	7.67	3.31	775	61.0%	0.45	12.39	3.03	100.0%	29.4%	\$9.44	\$423.67
Thomas Fulcher	12781911	10	1092	1.7	8.94	2.75	672	61.5%	0.51	11.30	3.19	100.0%	70.0%	\$0.00	\$428.06
Bar T Ranch/Will Taylor	9J20	11	1192	1.4	7.20	2.70	747	62.7%	0.37	12.01	2.83	50.0%	0.0%	\$9.18	\$434.01
Fulcher Family Farms	13291857 SHAF EXT Trav 6T6 038	16	1136	1.5	7.86	3.29	692	61.0%	0.58	11.76	3.33	100.0%	44.4%	\$0.00	\$418.38
Eddie Bradley	12655036 J F Traveler 5201	9	1134	1.3	6.97	3.03	700	61.7%	0.57	12.06	3.13	88.9%	11.1%	\$2.41	\$360.52
Harris Livestock	Meldon	9	1215	2.6	7.00	3.42	756	62.2%	0.37	13.03	2.79	88.9%	44.4%	\$0.00	\$389.50
McClure Farm	14133042 C C C Saugahatchee 095	7	1158	1.5	6.17	3.58	710	61.3%	0.39	12.40	2.74	100.0%	28.6%	\$0.00	\$350.36
Fulcher Family Farms	12781011 S H A F Ext RR TRV 446	15	1147	1.4	7.03	3.52	705	61.5%	0.53	11.89	3.23	100.0%	40.0%	\$0.00	\$407.85
Warden & Richards	Ironwood Cristo 6370 1101	10	1137	1.6	6.47	3.59	684	60.2%	0.50	12.32	2.82	90.0%	30.0%	\$2.24	\$342.23
Harris Livestock	13624705 W K U Doctor Pepper 0202	11	1202	1.5	6.44	3.66	743	61.8%	0.45	12.73	2.86	90.9%	18.2%	\$0.00	\$383.21
Massa Ranch/Darrell Kentner	13998979 Nichols Black Ink K691	5	1172	1.6	7.16	3.32	701	59.8%	0.34	12.66	2.46	80.0%	0.0%	\$0.00	\$386.44
Bar T Ranch	#3	10	1212	1.4	7.03	2.93	746	61.6%	0.43	11.86	3.03	70.0%	10.0%	\$1.80	\$417.00
Warden & Richards	Ironwood Cristo Pa 8223	9	1120	2.1	6.85	3.43	701	62.6%	0.54	12.21	3.05	100.0%	11.1%	\$0.57	\$356.08
Bishop Branch Farm/Joey Link	913	14	1139	1.5	6.89	3.18	699	61.4%	0.37	11.59	2.77	53.8%	0.0%	\$2.71	\$390.62
Brian Hunt	13985210 G A R New Design A651	6	1144	1.4	7.35	3.55	688	60.1%	0.59	11.40	3.34	100.0%	50.0%	\$0.00	\$420.27
Tommy Burns	13033529 Mills Illini 550	6	1123	1.3	6.50	3.25	687	61.2%	0.54	11.77	3.33	100.0%	33.3%	\$2.73	\$378.16
Brian Hunt	BYGO	28	1078	1.6	7.28	2.95	673	62.4%	0.48	11.74	2.89	75.0%	14.3%	\$4.63	\$392.66
Eddie Bradley	12306217 Rito 5TR8 of Rita 3X12 RRT	11	1110	1.4	7.36	2.76	690	62.2%	0.44	12.44	2.73	72.7%	18.2%	\$13.59	\$397.88
Gail & Marshall Miller	14387837 Nichols Ext M906	5	1221	1.9	7.22	3.48	755	61.8%	0.35	13.52	2.40	20.0%	0.0%	\$0.00	\$400.90
Home Park Farm/CR Conklin	476	17	1229	1.5	6.90	3.52	754	61.4%	0.43	12.28	2.99	76.5%	41.2%	\$2.33	\$391.02
Mill Creek Farms / Robert A. Phillips	MCF 2	6	1148	1.9	5.87	3.52	719	62.7%	0.44	13.27	2.66	83.3%	50.0%	\$0.00	\$354.62

**2005 Iowa Sire Profit Comparison Project
Progeny Averages on Sires with 5 Head or more**

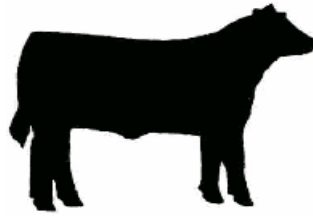


TCS
CF
Tri-County Steer
Carcass
Futurity
Cooperative



TriCounty Consignor or Bull Owner	Sire Name or ID Number	Progeny Number	Adj Final Wt.	Ave. Disp. Score	Feed to Gain	Overall ADG	Hot Carcass Wt.	Dress %	Fat Cover	Ribeye Area	Yield Grade	% Low Choice or better	% Upper 2/3s Choice or better	Ind. Health Trts.	SPA Calf Value
Ancil Johnson	13692960 L F Traveler 016	10	1150	1.8	7.60	3.26	708	61.6%	0.43	12.33	2.84	90.0%	20.0%	\$0.00	\$392.82
NW GA Research & Ed Center	13857632 O A F Right Time 017 5260	7	1158	1.7	7.42	3.19	710	61.3%	0.51	11.79	3.14	71.4%	14.3%	\$0.00	\$411.01
Virginia Whitner/Sue Lewis/Eddie Bradley/Bryan Hilsabeck	12530601 Rito 616 of 4B20 6807	7	1234	1.3	6.75	3.36	761	61.6%	0.55	12.56	3.23	100.0%	55.7%	\$7.11	\$399.70
Archie Davis	11953035 K A F Max 307	11	1213	1.5	6.65	3.50	746	61.5%	0.50	11.93	3.34	100.0%	63.6%	\$1.17	\$352.14
Brian Hunt	Denny	36	1161	1.7	7.25	3.20	720	62.1%	0.49	11.98	3.07	86.1%	36.1%	\$1.47	\$387.73
Archie Ladd	137981469)	6	1228	1.7	6.53	3.09	769	62.6%	0.46	13.40	2.76	16.7%	0.0%	\$2.19	\$383.92
Brian Hunt	V8	8	1169	1.9	6.45	3.44	718	61.4%	0.43	11.93	2.94	87.5%	37.5%	\$0.00	\$373.23
Abingdon Feeder Cattle Association/Anson Minton	13906641 Echo Ridge Rito 9K60 7931	8	1252	1.6	7.12	3.72	778	62.2%	0.55	12.38	3.48	100.0%	50.0%	\$0.00	\$435.87
NW GA Research & Ed Center	13979570 Kahn Ambush B126	11	1145	1.8	7.78	2.92	703	61.4%	0.60	12.08	3.26	90.9%	18.2%	\$1.94	\$413.25
Tommy Jack Shoun	13817463 M M Stockman 365-5265	37	1163	1.8	6.97	3.55	714	61.4%	0.46	12.40	2.98	100.0%	48.6%	\$13.66	\$384.03
NW GA Research & Ed Center	8610	8	1078	1.2	7.24	3.11	649	60.2%	0.41	12.26	2.55	100.0%	37.5%	\$0.00	\$405.03
Warden & Richards	Ironwood Cristo B2 8218	11	1143	2.1	6.74	3.49	702	61.4%	0.49	12.15	2.89	81.8%	9.1%	\$3.74	\$363.07
David Loutzenhiser	4060	33	1106	1.5	6.55	3.13	681	61.5%	0.50	12.01	3.05	97.0%	30.3%	\$3.79	\$348.29
Brian Hunt	13171041 Windy Knob Halfback J6	12	1125	1.8	8.17	2.89	713	63.3%	0.71	12.28	3.49	100.0%	16.7%	\$0.00	\$426.05
Brian Hunt	A651	11	1188	1.9	6.36	3.73	715	60.2%	0.41	12.39	2.83	100.0%	18.2%	\$2.68	\$391.36
Joe Griffith	12717609 R L C Mr Trend 581	13	1255	1.2	6.28	3.55	776	61.8%	0.53	12.41	3.24	75.0%	0.0%	\$6.69	\$379.51
Clathworthy Farms/Alex Turner	14167150 Turner Ideal 0104	8	1135	1.1	6.60	3.51	702	61.9%	0.46	12.53	2.70	100.0%	12.5%	\$1.67	\$405.83
NW GA Research & Ed Ctr.	13524075 Cpes Triple Threat 9601	13	1195	2.1	7.83	3.00	714	59.8%	0.43	11.85	2.92	76.9%	0.0%	\$0.00	\$438.26
Archie Davis	13209907 Davis New Design 902	11	1157	1.9	6.53	3.40	716	61.9%	0.47	12.02	3.10	100.0%	63.6%	\$0.00	\$336.60
Rosenbaum Farms/Gregory	442	11	1137	1.4	6.95	3.00	699	61.5%	0.45	12.08	2.86	81.8%	0.0%	\$15.83	\$402.65
NW GA Research & Ed Center	13575673 WAF 9M9 690	13	1163	1.4	7.60	3.05	712	61.3%	0.55	11.99	3.17	84.6%	0.0%	\$0.00	\$416.33
Donald Davies	DF LIBERTY PLUS	55	1219	1.4	7.17	3.51	749	61.4%	0.34	12.77	2.60	98.2%	56.4%	\$0.00	\$417.07
NW GA Research & Ed Ctr.	13348824 WAF 556 West 649	7	1194	1.1	8.11	3.19	716	60.0%	0.35	12.53	2.46	57.1%	28.6%	\$3.97	\$460.12
Brian Hunt	Bubba	11	1231	1.3	7.04	3.58	749	61.0%	0.50	11.91	3.28	90.9%	0.0%	\$3.04	\$388.85
Douglas Angus/ Don Douglas	13677917 M A R Sitz Rainmaker 0066	11	1035	1.7	6.72	2.98	664	60.2%	0.46	11.06	3.04	85.7%	28.6%	\$18.81	\$344.17
Oakalla Valley Partnership	12616282 Dipert W W Rito 328-603	13	1177	1.3	7.10	2.97	737	62.7%	0.48	11.87	3.10	76.9%	0.0%	\$23.05	\$381.91
Davis Angus Farm	DM	20	1062	1.2	6.99	3.29	649	61.0%	0.47	10.99	3.07	100.0%	80.0%	\$2.55	\$342.29
Larell Wilkinson	14031322 LCW Majestic Design 715-L42	5	1235	1.1	5.85	3.83	752	60.9%	0.44	13.28	2.73	60.0%	20.0%	\$0.00	\$396.48
Archie Davis	12613103 Davis Maximum 607	12	1210	1.7	6.55	3.62	750	62.0%	0.52	12.06	3.37	100.0%	58.3%	\$0.00	\$345.26
Roger McMartin	7527	9	1087	1.8	7.74	2.94	646	59.4%	0.50	11.49	2.92	100.0%	12.5%	\$18.78	\$360.62
Davies Farms	GAR westwind 7966	18	1211	1.8	8.44	2.96	747	61.7%	0.45	11.32	3.24	88.9%	50.0%	\$0.00	\$435.32
Eddie Bradley	13071562 Baf Roller 8321	11	1191	1.3	6.77	3.25	742	62.3%	0.57	12.37	3.23	90.9%	36.4%	\$7.50	\$364.60
Brian Hunt	13460439 Low Gap Royal 38 W W 027	7	1149	2.0	7.39	3.38	701	61.0%	0.62	12.21	3.24	85.7%	42.9%	\$0.00	\$421.59
Larell Wilkinson	13320122 Ironwood Stampede2 9366	10	1284	1.1	6.12	3.89	766	59.7%	0.44	12.55	3.00	90.0%	0.0%	\$1.16	\$414.17
Bart Renkoski	#6	6	1215	1.2	7.25	3.17	745	61.4%	0.48	11.82	3.11	66.7%	16.7%	\$5.50	\$407.51
Davis Angus Farm	DND	12	1070	1.1	6.95	3.15	659	61.6%	0.48	11.34	2.96	100.0%	72.7%	\$16.10	\$352.01
L.C. Curtis & Son, Inc.	11848995 Bridges Nugget 3133	7	1126	1.3	7.44	2.78	673	59.8%	0.49	11.99	2.97	100.0%	28.6%	\$4.09	\$395.04
Brian Hunt	WR	10	1171	1.7	7.87	3.06	722	61.7%	0.55	11.82	3.18	100.0%	10.0%	\$0.00	\$391.39
David L. Gardner	14184091 Echo Ridge Grid Maker 8002	13	1244	1.5	6.00	3.82	747	60.1%	0.34	12.95	2.51	69.2%	7.7%	\$1.15	\$397.88
Spring Creek Cattle Co.	12669673 Mill Coulee ZZZ 615	15	1138	1.5	7.66	3.25	697	61.3%	0.55	11.93	3.13	92.9%	28.6%	\$4.30	\$369.33
Ron Dunphy	106	16	1182	2.2	6.23	3.02	736	62.3%	0.28	13.11	2.26	31.3%	0.0%	\$31.01	\$353.29
Kathleen Haddon	13651565 Black Crest Consensus 72K	11	1098	1.4	6.92	3.10	660	60.0%	0.37	11.94	2.56	100.0%	27.3%	\$2.02	\$373.72
Kathleen Haddon	13899513 YON Right Time L217	8	1126	1.3	7.39	2.91	677	60.2%	0.38	11.79	2.69	83.3%	0.0%	\$0.00	\$385.87
L. C. Curtis & Son, Inc.	12167046 Bridges Executive 4045	10	1070	1.4	7.63	2.61	653	61.1%	0.52	11.87	2.94	80.0%	50.0%	\$12.41	\$382.04

**2005 Iowa Sire Profit Comparison Project
Progeny Averages on Sires with 5 Head or more**

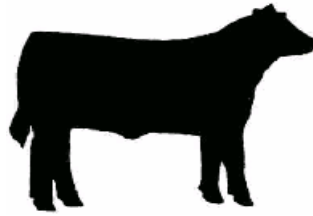


TCS
CF
Tri-County Steer
Carcass
Futurity
Cooperative



TriCounty Consignor or Bull Owner	Sire Name or ID Number	Progeny Number	Adj Final Wt.	Ave. Disp. Score	Feed to Gain	Overall ADG	Hot Carcass Wt.	Dress %	Fat Cover	Ribeye Area	Yield Grade	% Low Choice or better	% Upper 2/3s Choice or better	Ind. Health Trts.	SPA Calf Value
Rocky Creek Farms/ William Womack	13109114 R C F Max X77 51B	22	1204	1.3	6.50	3.58	737	61.2%	0.41	12.20	2.92	81.8%	22.7%	\$5.09	\$361.91
David Loutzenhiser	732	20	1094	1.5	6.79	3.00	683	62.4%	0.52	12.01	3.10	90.0%	40.0%	\$5.71	\$352.69
Martin Livestock/Russ Massa	F36	9	1154	1.2	7.06	3.05	700	60.7%	0.47	12.18	2.88	66.7%	33.3%	\$0.00	\$413.82
Oakalla Valley Partnership	13333313 S A F 013 Transform 8284	18	1091	1.8	7.17	2.73	672	61.6%	0.41	11.71	2.72	82.4%	0.0%	\$9.94	\$380.03
Oakalla Valley Partnership	12668686 Mill Coulee Rito Max 613	9	1089	1.4	7.41	2.61	670	61.5%	0.45	11.70	2.87	88.9%	33.3%	\$25.89	\$375.17
NW GA Research & Ed Center	13952523 Kahn Broadband R A 94L	11	1188	1.1	7.54	3.33	729	61.3%	0.63	12.14	3.43	72.7%	0.0%	\$0.00	\$412.09
Tom Merritt	13139311 M A F T C Traveler 658	11	1141	1.8	6.13	3.64	704	61.7%	0.58	12.48	3.25	81.8%	27.3%	\$0.00	\$356.09
Davis Angus Farm	DM40	9	1032	1.2	7.43	3.00	634	61.4%	0.53	11.14	3.16	100.0%	100.0%	\$1.33	\$340.86
Wagon Wheel Ranch/Fred Liebl	12615702 U G Rito Max 6589	16	1147	1.4	7.21	3.19	704	61.2%	0.53	11.44	3.24	62.5%	0.0%	\$1.83	\$377.18
Oakalla Valley Partnership	13339466 S A F Diversity 9197	18	1152	1.3	6.85	2.93	704	61.1%	0.42	12.77	2.53	70.6%	0.0%	\$27.86	\$386.54
Warden & Richards	13632482 PAA Pharlap A18	9	1112	2.1	6.89	3.43	689	61.9%	0.59	11.61	3.27	100.0%	33.3%	\$0.00	\$335.38
Oakalla Valley Partnership	13308736 S A F Focus 8259	13	1125	1.6	7.58	2.96	694	61.6%	0.42	11.78	2.83	84.6%	15.4%	\$6.89	\$391.14
NW GA Research & Ed Ctr.	13532852 Crestview Scotch Cap 9M9 833	5	1083	1.2	7.76	3.01	653	60.3%	0.53	11.70	3.10	100.0%	40.0%	\$0.00	\$404.13
Davis Angus Farm	DT25	11	1051	1.3	7.11	3.04	640	61.2%	0.48	11.14	3.00	100.0%	70.0%	\$4.36	\$337.21
Home Park Farm/CR Conklin	426	10	1182	1.5	6.88	3.80	728	61.5%	0.47	12.26	2.99	80.0%	20.0%	\$0.00	\$393.40
NW GA Research & Ed Center	14138699 Bricton Traveler 1221	8	1198	1.3	7.44	3.29	725	60.5%	0.58	12.45	3.15	62.5%	0.0%	\$0.00	\$340.77
South Ozarks Premier Beef Marketers, LLC	Really Windy	5	1283	1.1	6.51	3.53	804	62.6%	0.47	12.40	3.28	60.0%	20.0%	\$0.00	\$438.34
4R Cattle Co.	RTL	14	1078	1.7	7.81	2.60	663	61.5%	0.39	11.99	2.58	42.9%	7.1%	\$13.21	\$449.28
Archie Davis	12022688 Davis Bold Scotch 467	11	1300	1.7	6.62	3.64	787	60.6%	0.46	12.74	3.13	90.9%	54.5%	\$0.00	\$380.37
Webb Davis	WWW	13	1063	1.3	7.45	2.96	645	60.6%	0.43	11.21	2.85	100.0%	23.1%	\$3.23	\$361.17
Ben Lindsey Farms	13502354 C F Timely 28	7	1096	2.0	7.45	2.99	674	61.6%	0.41	11.76	2.73	71.4%	14.3%	\$0.00	\$347.15
NW GA Research & Ed Center	13611189 WAF 9M9 990	19	1118	1.8	7.89	2.87	692	61.9%	0.50	11.86	3.04	78.9%	5.3%	\$2.95	\$415.85
Brian Hunt	SUNUP	12	1118	1.8	7.51	2.81	692	61.9%	0.44	12.55	2.60	45.5%	0.0%	\$15.60	\$435.29
Fulcher Family Farms	12961867 H G Traveler Ext 727	12	1093	1.6	8.11	3.02	673	61.6%	0.63	11.60	3.42	83.3%	50.0%	\$1.33	\$412.54
Davis Angus Farm	BC	11	1054	1.1	6.79	3.21	636	60.4%	0.41	11.69	2.61	90.9%	45.5%	\$3.55	\$350.70
Gail & Marshall Miller	14378871 Nichols Ext M917	11	1093	1.6	7.76	2.93	663	60.7%	0.41	11.54	2.85	90.9%	18.2%	\$0.00	\$388.11
LC Curtis & Son	13810051 BAF Emulous 0142 2058 7072	8	1279	1.2	8.10	3.05	787	61.5%	0.63	12.30	3.63	100.0%	62.5%	\$0.00	\$427.79
Joe Griffith	13402927 W A F Rito 924 of 210	12	1187	1.3	6.26	3.19	733	61.7%	0.47	12.10	3.01	63.6%	27.3%	\$11.08	\$375.60
Dwight Watson	14243754 BoPat Extra 291	5	1155	1.8	6.08	3.36	709	61.5%	0.38	11.94	2.84	100.0%	20.0%	\$0.00	\$366.36
Brian Hunt	38 BULL	22	1063	1.9	6.95	3.01	646	60.7%	0.43	11.62	2.68	63.6%	9.1%	\$6.50	\$383.29
Julian & Patti Price	T	10	1337	1.4	7.01	4.18	827	61.9%	0.57	13.33	3.21	50.0%	20.0%	\$0.00	\$445.57
Brent Hanshaw	13769607 Nichols Performa K463	11	1109	2.0	7.28	3.06	672	60.6%	0.39	12.04	2.64	72.7%	9.1%	\$0.73	\$361.19
Rosenbaum Farms	2	16	1150	1.4	7.07	2.87	705	61.3%	0.42	12.08	2.84	68.8%	0.0%	\$25.36	\$408.48
Eddie Bradley	13633273 D W Bar EXT 013D	19	1122	1.4	7.14	2.86	685	61.1%	0.42	12.29	2.67	33.3%	0.0%	\$8.49	\$386.10
Brian Hunt	Bullet	35	1143	1.7	7.32	3.21	699	61.2%	0.48	11.65	3.05	76.5%	20.6%	\$4.62	\$404.76
Tommy Jack Shoun	Freightliner	6	1125	2.1	6.93	3.62	680	60.5%	0.49	11.70	3.17	83.3%	50.0%	\$13.66	\$365.25
Larell Wilkinson	13677471 Ironwood Stampede 036 0355	5	1208	1.4	6.55	3.80	749	62.1%	0.60	11.72	3.62	100.0%	0.0%	\$0.00	\$387.46
NW GA Research & Ed Ctr.	13535909 Cpes Schurrtop Supreme 9629	14	1101	1.3	7.54	3.04	664	60.4%	0.51	11.69	3.05	78.6%	14.3%	\$1.79	\$396.13
Bar T Ranch/Bentley East	W841	19	1101	1.3	7.10	2.93	672	61.1%	0.49	12.31	2.84	84.2%	26.3%	\$17.88	\$365.50
Bar T Ranch/Bentley East	OO7	11	1131	1.3	6.91	3.35	686	60.7%	0.55	11.53	3.30	90.9%	36.4%	\$2.18	\$350.60
Bar T Ranch/Bentley East	13802817 Yon Hi Spade 039 K74	8	1148	1.6	7.37	2.83	718	62.5%	0.43	12.39	2.88	50.0%	0.0%	\$13.33	\$385.25
Charles Rosenkrans	14006798 Martin Summit Traveler 2005	8	1251	1.3	6.17	3.74	768	61.4%	0.38	12.49	2.96	62.5%	0.0%	\$2.38	\$375.84
Ben Lindsey Farms	13117982 Double O Transformer 802	11	1137	1.6	7.72	3.17	696	61.3%	0.51	11.40	3.18	81.8%	0.0%	\$3.10	\$362.37
B.R. Haddon	4	5	1222	1.3	7.68	2.70	723	59.2%	0.44	11.82	2.99	80.0%	0.0%	\$32.26	\$419.38
L.C. Curtis & Son, Inc.	13095735 Bridges Resolution 7007	10	1115	1.5	7.82	2.72	687	61.6%	0.53	11.49	3.20	60.0%	30.0%	\$16.71	\$397.36
Lowell Andersen	13665067 Prairiedge Absolute 023	13	1210	1.8	6.75	3.10	741	61.2%	0.45	11.85	3.16	84.6%	15.4%	\$11.55	\$405.40

**2005 Iowa Sire Profit Comparison Project
Progeny Averages on Sires with 5 Head or more**



TCSCF
Tri-County Steer
Carcass
Futurity
Cooperative



TriCounty Consignor or Bull Owner	Sire Name or ID Number	Progeny Number	Adj Final Wt.	Ave. Disp. Score	Feed to Gain	Overall ADG	Hot Carcass Wt.	Dress %	Fat Cover	Ribeye Area	Yield Grade	% Low Choice or better	% Upper 2/3s Choice or better	Ind. Health Trts. Cost	SPA Calf Value
NW GA Research & Ed Center	13412015 Ug Enhancer 9551	12	1026	1.4	6.72	3.07	624	60.9%	0.47	11.83	2.73	66.7%	25.0%	\$1.70	\$353.34
Brian Hunt	Byrego	20	1140	1.6	7.10	3.33	707	62.1%	0.56	12.02	3.25	90.0%	5.0%	\$0.17	\$375.27
McCord W Hall	10776479 N Bar Emulation EXT	6	1149	1.5	7.38	3.09	712	62.0%	0.44	11.75	3.00	83.3%	0.0%	\$0.00	\$360.09
Brian Hunt	Average	9	1217	1.8	8.11	3.41	754	62.0%	0.72	11.48	3.93	100.0%	33.3%	\$1.26	\$391.71
LaRell Wilkinson	13	5	1215	1.4	7.56	3.37	763	62.8%	0.58	11.68	3.55	100.0%	60.0%	\$0.00	\$424.48
LC Curtis & Son	12499216 M H B Oliver of Z 145	14	1141	1.1	7.67	2.89	707	61.9%	0.61	12.23	3.31	71.4%	21.4%	\$7.94	\$399.36
L. C. Curtis & Son, Inc.	13425355 Ug Traveler 8180 8640	9	1027	1.2	7.58	2.47	618	59.6%	0.51	11.20	2.96	77.8%	33.3%	\$24.18	\$377.21
Eddie Bradley	11933313 Rito 2E82 of 7S11 Traveler	9	1177	1.9	7.75	2.82	721	61.4%	0.54	11.76	3.31	77.8%	0.0%	\$13.11	\$393.18
Jason Peters	13758082 P A A 3113 Northlander 0028	17	1060	2.0	7.50	2.79	643	60.6%	0.33	11.46	2.54	70.6%	0.0%	\$0.00	\$360.37
NW GA Research & Ed Center	102	8	1049	1.7	7.08	3.14	636	60.9%	0.53	11.63	3.00	50.0%	12.5%	\$0.00	\$370.25
Tom Merritt	13069686 B A F Ext 1187	7	1129	2.1	5.92	3.53	685	60.7%	0.50	11.87	3.07	71.4%	14.3%	\$0.00	\$340.88
Bruce Brae GA/RR Bruce	13545243 Daltons Explorer 026	13	1070	1.2	6.78	3.09	660	61.7%	0.45	11.22	2.90	69.2%	23.1%	\$21.56	\$335.65
Holton Farms	13752972 Winns Bandolier 700	5	1102	1.5	8.35	2.61	676	61.3%	0.49	11.62	2.95	60.0%	0.0%	\$8.78	\$381.95
Pomp Berger/Weaver L. Forest	Nick	7	1154	1.8	7.09	3.25	718	62.2%	0.59	12.06	3.41	85.7%	28.6%	\$0.00	\$411.50
Ed Wiederstein	Circle Oak	6	1154	1.2	7.01	3.21	699	60.6%	0.59	11.38	3.58	100.0%	50.0%	\$8.86	\$394.46
Davis Angus Farm	K	6	979	1.3	7.92	2.76	599	61.1%	0.55	10.38	3.34	100.0%	50.0%	\$12.50	\$331.10
Steve James	13877830 U T P Bextor 2171	5	1157	1.2	6.26	3.43	704	60.9%	0.47	12.42	3.04	20.0%	0.0%	\$0.00	\$389.84

Ankina Sires

Brent Hanshaw	ANK463	8	1157	1.5	6.98	3.00	695	60.0%	0.48	11.89	2.92	37.5%	0.0%	\$0.00	\$400.55
---------------	--------	---	------	-----	------	------	-----	-------	------	-------	------	-------	------	--------	----------

Red Angus Sires

Robert Stauber	83	25	1171	1.3	7.61	2.73	728	62.2%	0.43	11.88	2.93	80.0%	16.0%	\$1.97	\$409.82
Julian & Patti Price	J7	10	1341	1.5	7.19	4.10	819	61.1%	0.49	12.85	3.14	70.0%	10.0%	\$4.20	\$484.66
JanBil Farms	LS067	7	1097	1.2	5.92	3.40	666	60.8%	0.39	12.37	2.54	100.0%	28.6%	\$0.00	\$313.05
JanBil Farms	Chercan4912	11	1098	1.5	6.21	3.30	664	60.5%	0.40	12.41	2.56	100.0%	27.3%	\$1.17	\$333.97

Balancer Sires

Smith Farm	758391	5	1245	1.2	7.06	3.04	799	64.2%	0.49	13.10	3.17	60.0%	0.0%	\$7.80	\$452.80
------------	--------	---	------	-----	------	------	-----	-------	------	-------	------	-------	------	--------	----------

Beef Friesian Sires

Joan Liebrecht	BF	12	1196	1.6	7.68	3.06	739	61.8%	0.37	12.53	2.62	58.3%	8.3%	\$0.00	\$434.80
----------------	----	----	------	-----	------	------	-----	-------	------	-------	------	-------	------	--------	----------

Beefmaster Sires

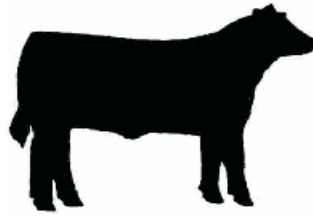
George Haddon	227	8	1122	1.4	7.33	2.69	690	61.4%	0.39	12.05	2.64	0.0%	0.0%	\$6.03	\$377.74
B.R., Kathleen, George Haddon	G622	11	1067	1.3	7.67	2.47	654	61.3%	0.43	11.35	2.86	36.4%	0.0%	\$26.66	\$379.40

Brangus Sires

Bar T Ranch	706776	6	1283	1.8	7.95	2.76	802	62.5%	0.51	13.73	2.89	60.0%	0.0%	\$0.00	\$459.11
Joe Davis	L106	6	1132	1.6	8.35	2.94	697	61.6%	0.67	11.67	3.57	100.0%	33.3%	\$1.83	\$429.19

Charolais Sires

**2005 Iowa Sire Profit Comparison Project
Progeny Averages on Sires with 5 Head or more**

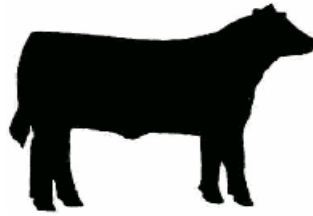


TCSCF
Tri-County Steer
Carcass
Futurity
Cooperative



TriCounty Consignor or Bull Owner	Sire Name or ID Number	Progeny Number	Adj Final Wt.	Ave. Disp. Score	Feed to Gain	Overall ADG	Hot Carcass Wt.	Dress %	Fat Cover	Ribeye Area	Yield Grade	% Low Choice or better	% Upper 2/3s Choice or better	Ind. Health Trts.	SPA Calf Value
Forrest & Donna Thompson	#20	5	1351	1.4	6.56	3.56	831	61.6%	0.28	13.98	2.25	80.0%	20.0%	\$0.00	\$411.04
Bart Renkoski	462334 ACE MR UNLTD G81 P	8	1340	1.4	5.80	3.93	825	61.6%	0.35	14.80	2.26	62.5%	0.0%	\$0.00	\$384.34
MBS Charolais	T150	7	1274	2.3	7.36	2.87	811	63.6%	0.32	14.44	2.16	14.3%	0.0%	\$0.00	\$431.91
Joan Liebrecht	FEMO	23	1222	1.9	8.14	2.79	759	62.2%	0.29	12.75	2.44	68.2%	8.7%	\$5.86	\$442.52
Tommy Jack Shoun	M624911 VPI PRIME DUKE 2114	37	1216	3.2	7.19	3.53	750	61.7%	0.41	12.17	3.07	89.2%	5.4%	\$14.36	\$402.24
Lewis Farms/Bentley East	3336	6	1148	1.9	7.22	2.70	696	60.8%	0.37	12.92	2.35	83.3%	0.0%	\$0.00	\$398.29
Breezy Heights Charolais	M491427 SCF CUJO	7	1147	2.0	5.37	3.24	696	60.7%	0.31	13.16	2.20	57.1%	0.0%	\$2.80	\$338.09
Harmon Charolais	M510136 AC JUMBO DUKE 907	8	1143	1.6	6.16	2.66	705	61.7%	0.17	12.74	2.00	0.0%	0.0%	\$50.89	\$377.70
Composite Sires															
JanBil Farms	Stabilizer	6	1148	1.3	6.62	3.28	706	61.4%	0.46	11.77	3.08	83.3%	0.0%	\$0.00	\$344.41
Rocky Rush	759953 LJR N23	13	1197	1.6	6.15	3.19	727	60.8%	0.28	13.19	2.23	7.7%	0.0%	\$2.54	\$388.19
South Devon Sires															
Joe & Judi Jones	69A	14	1158	1.3	6.03	3.12	723	62.5%	0.36	12.81	2.55	100.0%	21.4%	\$2.86	\$376.91
Gelbvieh Sires															
Joe & Judi Jones	37A	19	1121	1.6	6.79	3.24	694	62.0%	0.34	12.37	2.47	94.7%	31.6%	\$3.24	\$367.92
Ron Penton	2H	12	1331	1.2	6.58	3.37	810	60.8%	0.37	13.64	2.56	75.0%	8.3%	\$19.14	\$410.62
C W Senn/Bentley East	Average	13	1218	1.6	7.10	3.01	747	61.4%	0.33	13.87	2.22	76.9%	0.0%	\$2.00	\$418.62
Bar T Ranch	DANNY	5	1258	1.3	7.39	2.77	779	62.0%	0.39	12.32	2.89	60.0%	0.0%	\$3.80	\$456.64
Fulcher Family Farms	609811	17	1112	1.6	7.42	3.04	691	62.1%	0.43	12.56	2.64	82.4%	17.6%	\$3.71	\$413.26
Joan Liebrecht	313	8	1219	1.3	7.83	3.04	757	62.2%	0.32	12.30	2.65	50.0%	25.0%	\$1.79	\$423.04
Ron & Tim Dunphy	G	20	1212	2.7	6.05	3.17	737	60.9%	0.34	12.72	2.52	55.0%	5.0%	\$20.74	\$351.13
Joan Liebrecht	BG	9	1224	1.7	7.89	2.99	762	62.3%	0.32	12.38	2.63	50.0%	0.0%	\$13.78	\$439.52
Todd Dunphy	13	12	1151	1.5	6.12	2.99	706	61.3%	0.31	12.50	2.40	66.7%	8.3%	\$42.64	\$339.73
Gary Martens	84H	6	1172	1.2	5.63	3.29	711	60.6%	0.28	12.22	2.50	66.7%	0.0%	\$2.39	\$357.60
South Ozarks Premier Beef Marketers, LLC/ Brent Lorimor	51K	5	1292	2.4	6.33	3.26	811	62.8%	0.34	13.20	2.69	40.0%	0.0%	\$0.00	\$430.17
Jack McCauley/Bentley East	10	5	1179	2.0	6.84	3.12	733	62.2%	0.39	12.98	2.59	80.0%	0.0%	\$0.00	\$378.27
Todd Dunphy	10	9	1165	1.9	6.31	2.87	719	61.7%	0.33	13.01	2.33	44.4%	0.0%	\$32.89	\$349.89
Tim Dunphy	Echo	6	1184	2.4	6.46	2.77	726	61.4%	0.31	13.32	2.22	50.0%	0.0%	\$57.53	\$366.96
South Ozarks Premier Beef Marketers, LLC/ Brent Lorimor	Lil G	5	1293	1.8	6.18	3.36	803	62.1%	0.34	14.46	2.29	20.0%	0.0%	\$0.00	\$453.48
Stonegate Farm	653645	11	1267	1.2	6.45	3.37	781	61.6%	0.30	12.94	2.62	45.5%	0.0%	\$0.00	\$398.24
Rusty Thomson/Bentley East	25	5	1169	2.1	6.77	3.03	712	61.1%	0.24	13.90	1.72	20.0%	0.0%	\$7.27	\$423.02
Hereford Sires															
Jim McClure	P41105040 SHR F6 MR SAUTEE 19J	8	1120	1.7	8.33	2.88	692	61.8%	0.52	11.36	3.19	100.0%	25.0%	\$0.00	\$387.37
NW GA Research & Ed Ctr	C821	6	1156	1.3	6.98	3.09	717	62.1%	0.49	13.07	2.79	83.3%	0.0%	\$5.89	\$396.02
Julian & Patti Price	454	7	1356	1.6	7.15	4.10	843	62.2%	0.60	13.54	3.31	85.7%	14.3%	\$0.00	\$458.78
Forrest Polled Herefords	K58	9	1191	1.1	7.77	2.85	728	61.2%	0.50	12.31	3.01	88.9%	11.1%	\$3.78	\$432.30
Forrest Polled Herefords	S14	7	1159	1.1	6.50	3.30	694	59.9%	0.49	11.73	2.97	85.7%	28.6%	\$9.57	\$372.06
Stonegate Farm	P41140930 NT PLATO 19 207	8	1289	1.1	6.71	3.58	796	61.7%	0.54	12.88	3.32	87.5%	0.0%	\$6.43	\$398.22

**2005 Iowa Sire Profit Comparison Project
Progeny Averages on Sires with 5 Head or more**



TCSCF
Tri-County Steer
Carcass
Futurity
Cooperative



TriCounty Consignor or Bull Owner	Sire Name or ID Number	Progeny Number	Adj Final Wt.	Ave. Disp. Score	Feed to Gain	Overall ADG	Hot Carcass Wt.	Dress %	Fat Cover	Ribeye Area	Yield Grade	% Low Choice or better	% Upper 2/3s Choice or better	Ind. Health Trts. Cost	SPA Calf Value
Dave Spark	057J	5	1029	1.3	6.83	2.93	614	59.7%	0.52	10.16	3.30	80.0%	40.0%	\$17.33	\$290.77
Innisfail Farm	42237827 INNISFAIL 235 12L	8	1256	1.2	7.84	3.03	751	59.8%	0.50	12.14	3.14	100.0%	0.0%	\$12.59	\$409.07
NW GA Research & Ed Ctr	W-FIRE	5	1269	1.2	7.14	3.51	758	59.7%	0.65	12.04	3.59	100.0%	0.0%	\$8.41	\$408.56
Maple Springs Farm	9H	10	1153	1.3	7.57	3.31	700	60.7%	0.65	11.70	3.53	90.0%	20.0%	\$2.22	\$380.79
Forrest Polled Hereford	8044	5	1157	1.1	7.12	3.06	692	59.8%	0.44	11.90	2.84	60.0%	0.0%	\$13.00	\$421.96
NW GA Research & Ed Ctr	HP835	7	1163	1.2	7.42	3.07	703	60.5%	0.56	12.10	3.27	71.4%	0.0%	\$5.72	\$402.26
NW GA Research & Ed Ctr	HH295	8	1182	1.4	6.95	3.24	716	60.6%	0.48	12.00	3.03	75.0%	0.0%	\$28.31	\$388.65
NW GA Research & Ed Ctr	28HH0712	5	1202	1.1	7.10	3.27	741	61.8%	0.49	12.12	3.12	0.0%	0.0%	\$8.71	\$399.88
Bar T Ranch/Bentley East	P42282201 FPH HITTER 4007 L61	6	1189	1.2	7.56	2.95	734	61.7%	0.52	12.23	3.11	33.3%	16.7%	\$11.74	\$407.51
Maple Springs Farm	K67	12	1161	1.2	6.96	3.18	716	61.6%	0.58	11.78	3.40	91.7%	16.7%	\$0.00	\$388.27
Matthew Jones Farm	P41121960 CES VICTOR 4009 X240	9	1157	1.3	7.85	2.74	698	60.4%	0.49	11.81	3.00	62.5%	0.0%	\$1.56	\$383.63
Forrest Polled Herefords	F35	6	1194	1.1	7.63	3.04	713	59.6%	0.57	11.83	3.32	66.7%	0.0%	\$2.67	\$421.52
Dave Spark	991	9	1029	1.5	7.33	2.72	621	60.3%	0.64	10.84	3.40	66.7%	0.0%	\$26.68	\$307.02

Limousin Sires

Sanders Farms	Lim	5	1262	1.9	5.74	3.48	771	61.1%	0.28	13.38	2.35	100.0%	0.0%	\$0.00	\$398.86
---------------	-----	---	------	-----	------	------	-----	-------	------	-------	------	--------	------	--------	----------

Salers Sires

Ridgetop Salers	31J	6	1025	1.3	6.51	2.77	626	61.1%	0.25	11.94	2.00	0.0%	0.0%	\$24.25	\$330.92
Ridgetop Salers	Apo	5	1333	1.4	6.59	3.51	822	61.7%	0.38	14.60	2.26	100.0%	20.0%	\$0.00	\$405.43

Shorthorn Sires

Karl Kenagy	4043048 SSC CLYDE	5	1294	1.3	6.18	3.56	820	63.4%	0.43	13.28	2.88	60.0%	0.0%	\$5.60	\$377.59
Tom Enarson	B	5	1284	1.2	6.68	3.17	790	61.5%	0.34	12.48	2.82	100.0%	0.0%	\$14.16	\$406.16

Simmental-Angus Sires

Donald Davies	49K	19	1186	1.7	7.80	3.00	734	61.9%	0.41	12.61	2.68	94.7%	31.6%	\$0.00	\$409.01
Donald Davies	SXL	103	1169	1.6	7.29	3.19	720	61.6%	0.37	12.98	2.46	88.2%	24.5%	\$0.49	\$402.23
Massa Ranch	M 920	8	1163	1.4	7.85	3.04	729	62.7%	0.34	12.19	2.69	37.5%	12.5%	\$0.00	\$407.26
Donald Davies	7L	18	1171	1.5	7.72	2.90	715	61.0%	0.34	12.81	2.38	64.7%	17.6%	\$4.15	\$410.82
Davies Farms	SX SIM CROSS	24	1151	2.4	7.55	3.04	714	62.0%	0.46	12.06	2.89	62.5%	16.7%	\$0.00	\$367.68
Donald Davies	SX	94	1186	1.7	7.36	3.26	729	61.5%	0.38	12.89	2.58	86.2%	25.5%	\$0.00	\$417.66
Rosenbaum Farms/Gregory	Larry	7	1063	1.0	6.49	3.02	654	61.5%	0.44	12.40	2.57	57.1%	0.0%	\$26.16	\$370.66

Simmental Sires

Tennessee Tech Univ.	129	5	1269	1.4	6.83	3.19	789	62.2%	0.27	13.98	2.04	100.0%	20.0%	\$0.00	\$413.79
Dean McKibben	2148591 M32	6	1239	2.0	7.51	3.34	776	62.5%	0.35	13.47	2.48	83.3%	0.0%	\$0.00	\$414.17
Donald Davies	ONE EYE JACK	14	1270	1.4	6.87	3.77	787	61.9%	0.36	13.75	2.46	100.0%	57.1%	\$0.00	\$410.04
McCord W Hall	1958410 GW LUCKY STRIKE 147G	6	1234	1.2	7.00	3.33	766	62.0%	0.35	13.43	2.40	100.0%	0.0%	\$0.00	\$376.82
Joe & Judi Jones	56	15	1105	1.3	7.14	3.25	683	61.8%	0.41	11.83	2.81	93.3%	26.7%	\$1.48	\$367.96
JanBil Farms	Jalapena	5	1145	1.6	6.49	3.12	725	63.2%	0.30	12.24	2.57	100.0%	0.0%	\$0.00	\$347.13
Donald Davies	TE IRISH STOCKMAN H3	64	1251	1.7	7.41	3.45	773	61.8%	0.38	13.06	2.62	90.6%	29.7%	\$0.00	\$426.84
Stephen Turner/Steve Jones	Legacy	17	1213	1.6	6.54	3.45	740	61.0%	0.28	13.56	2.05	58.8%	0.0%	\$4.62	\$377.42

**2005 Iowa Sire Profit Comparison Project
Progeny Averages on Sires with 5 Head or more**



TCSCF
Tri-County Steer
Carcass
Futurity
Cooperative



TriCounty Consignor or Bull Owner	Sire Name or ID Number	Progeny Number	Adj Final Wt.	Ave. Disp. Score	Feed to Gain	Overall ADG	Hot Carcass Wt.	Dress %	Fat Cover	Ribeye Area	Yield Grade	% Low Choice or better	% Upper 2/3s Choice or better	Ind. Health Trts. Cost	SPA Calf Value
Rosenbaum Farms/Gregory	21	7	1134	1.3	6.53	3.07	693	61.1%	0.31	12.36	2.45	100.0%	14.3%	\$17.22	\$389.74
Jerry Graybeal	#3 Dale	6	1214	1.7	6.22	3.47	755	62.2%	0.34	12.93	2.62	100.0%	0.0%	\$0.00	\$388.79
John & Janet Massey	2023886 PVF H90	7	1345	1.2	7.20	3.32	815	60.6%	0.44	12.86	2.96	57.1%	14.3%	\$0.00	\$426.32
Davies Farms	MD MISTER DIAMOND	22	1215	1.8	7.48	3.06	736	60.6%	0.30	12.77	2.34	86.4%	13.6%	\$0.00	\$396.36
Wolf Creek Farms	1886735 H-HS JACOB	6	1241	1.3	6.10	3.44	747	60.2%	0.33	12.62	2.50	66.7%	0.0%	\$4.67	\$377.53
Rosenbaum Farms/Gregory	JDJ	21	1109	1.4	6.56	3.00	685	61.7%	0.39	12.52	2.56	81.0%	28.6%	\$19.86	\$381.68
William E. Heser	Bond	22	1128	1.5	6.44	2.92	697	61.7%	0.40	12.86	2.44	57.1%	4.8%	\$10.26	\$348.25
Donald Davies	JOURNEYMAN	5	1303	1.8	6.89	3.96	805	61.8%	0.40	12.70	2.90	80.0%	20.0%	\$0.00	\$406.18
John Bauer	J68	5	1155	2.1	7.83	3.04	716	62.0%	0.37	12.28	2.69	60.0%	20.0%	\$0.00	\$398.01
Jim Wallick	23	8	1186	1.2	6.72	2.96	735	62.0%	0.46	12.61	2.97	87.5%	12.5%	\$14.75	\$384.50
William E. Heser	Clif	15	1072	1.3	6.08	2.92	643	59.9%	0.32	12.21	2.21	78.6%	7.1%	\$35.57	\$331.29
Emerald J Farms	1759412 JNA GUNS BLACK ASSASSIN	6	1254	1.2	7.09	3.09	762	60.6%	0.33	13.27	2.35	33.3%	0.0%	\$10.42	\$402.62
Marty Bunton	G270	5	1093	1.9	6.62	3.07	658	60.2%	0.38	11.86	2.54	50.0%	0.0%	\$0.00	\$351.52
David L. Gardner	MF 55K RE	8	1124	1.5	6.16	2.92	691	61.6%	0.28	12.86	2.09	37.5%	12.5%	\$1.25	\$389.93
Sean & Lynn Parker	2054992 DORA LEE RED KNIGHT	7	1058	1.5	5.63	2.73	640	60.6%	0.27	12.80	1.87	33.3%	0.0%	\$11.29	\$331.17
Mike, Seth & Trish Huffman	Ivomec	10	1146	1.4	5.23	3.32	690	60.1%	0.26	13.83	1.65	20.0%	0.0%	\$15.21	\$319.45
Tarentaise Sires															
Leonard Sheriff	203995	10	1240	1.7	6.90	3.25	764	61.6%	0.32	13.17	2.36	30.0%	0.0%	\$0.00	\$405.06