

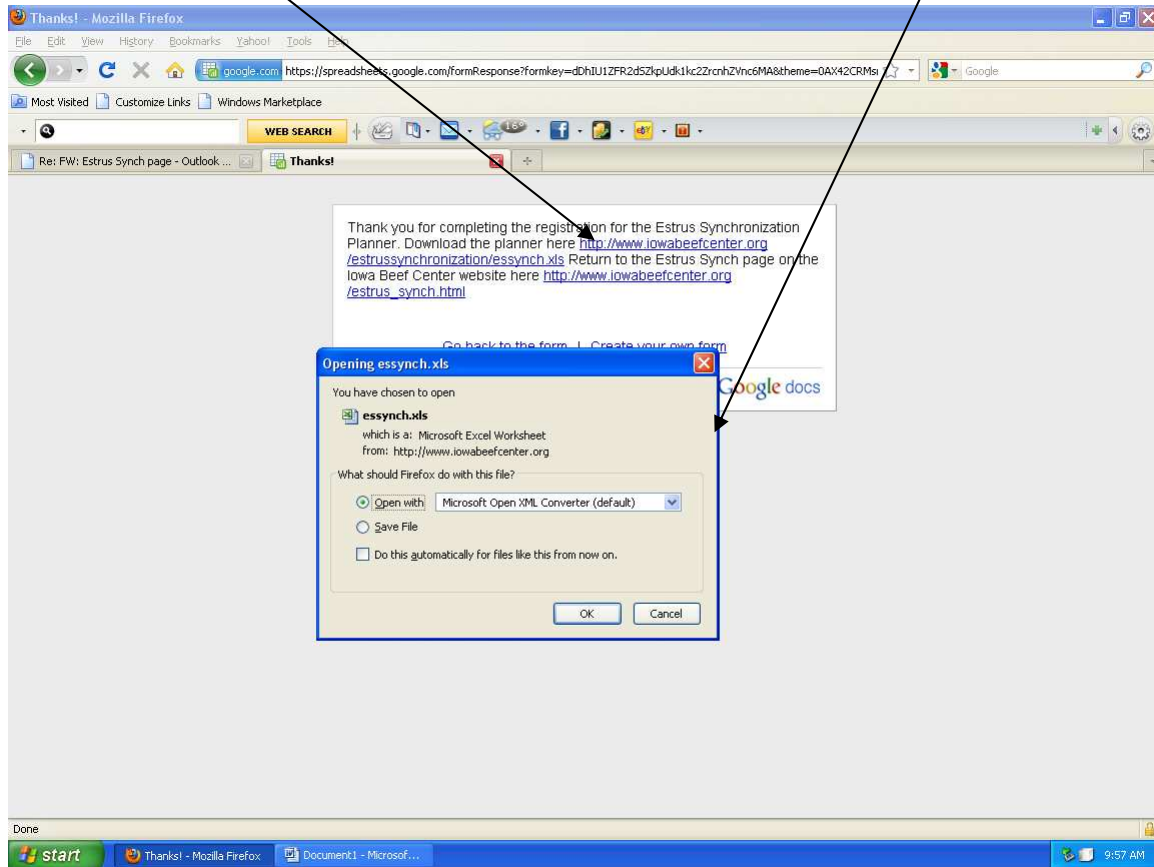
Download Tips for Bovine Estrus Synch Users

You will need a copy of MS Excel or Open Office to use this program.

1. After registering and submitting the registration, select the download link.
2. A pop-up will then appear which allows you to open or save the file. Select “Open” followed by the “OK” button.

Download Link

Pop-up



3. After opening, you will see the Estrus Synch Planner Program (essynch.xls) appear on your screen. This program will open in a compatibility mode which will allow it to run in either old or new versions of Excel.

4. Setting Up the Program

- a. To see all the navigation tabs at the bottom of your program, select the MAXIMIZE button.
- b. You can modify the size further if you wish as you normally would with an Excel sheet..

MAXIMIZE button





NAVIGATION TABS now appear.

*Proceed to the PLANNER WORKSHEET tab to begin using the program.

*Provide inputs in the manner shown below.

*Go to the CALENDAR and PRINT OUT tabs to review work.

*Select PRINT from your EXCEL menu to print out your work.

The screenshot shows a Microsoft Excel spreadsheet titled "Estrus Synchronization Planner" with the following content:

Beef Reproduction Task Force
Estrus Synchronization Planner
synch 11

Producer Name: _____
Address: _____
Town: _____
Phone Number: _____
Group: _____
Prepared by: _____
Phone Number: _____

Inputs **Tips**

Date to start breeding: (Example: 6/1/2010)
Time of day you want to breed: >> Clean-up AI between:
Detection-Insemination type: 1 = Estrus AI, 2 = Estrus AI & Clean-up AI, 3 = Fixed-Time AI
Estrus synchronization system: Select number from list of systems below.
Days from last AI to bull turn in:
Trips through the working facility:
Cost Comparison - Alternative 1: Select number from list of systems below.
optional Alternative 2: Select number from list of systems below.

Heat detect & Clean-up AI

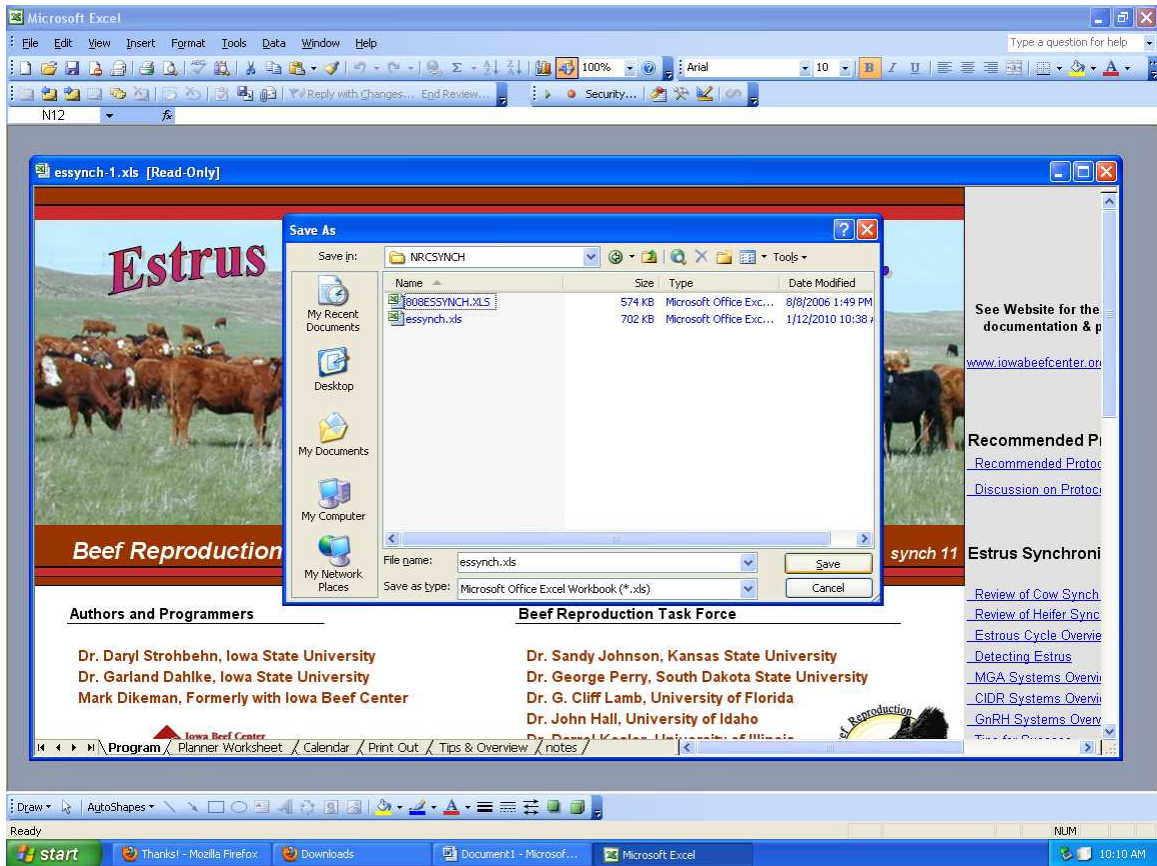
Cow Systems	Heifer Systems
16 = Select Synch + CIDR with E-AI and Cleanup AI	16 = Select Synch + CIDR with E-AI and Cleanup AI
19 = Select Synch with E-AI and Cleanup AI	26 = MGA + PG with E-AI and Cleanup AI
33 = PG 6-Day CIDR with E-AI and Cleanup AI	31 = 14 - Day CIDR + PG with E-AI and Cleanup AI

Program \Planner Worksheet \Calendar \Print Out \Tips & Overview \notes

5. Saving the program – (If you save it you will not need to download again.)

a. **PREVIOUS USERS:**

- i. This version is “synch 11”. If you have an earlier version of the Estrus Synchronization program on your computer replace it with this version. Do this by:
 1. Select the SAVE-AS option
 2. Open the existing directory that contains your older version. Normally this would be a directory called “nrcsynch” located on your “C” drive
 3. Select SAVE. Your program will be available as it was before, but now updated. (see following page)



(When saving you will replace your old version with the new version.)

- b. **NEW USERS:** (previous users can do this as well)
 - i. Select the **SAVE-AS** option as you would or could do when saving a regular Excel spreadsheet.
 - ii. Choose an appropriate location that will allow you to find the sheet again when you need to use it. You could save it directly to your computer desk top.

Check this download web site occasionally for updates, news and supporting documents from the Beef Reproduction Task Force.