

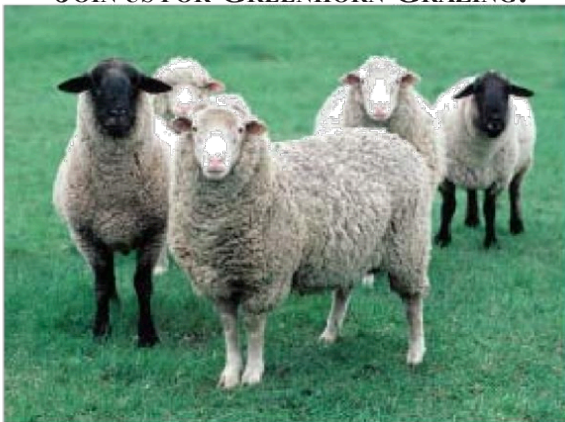
## WHAT DOES THE PROGRAM COST?

The cost of Greenhorn Grazing has been offset by grants from the Leopold Center for Sustainable Agriculture, the Iowa Beef Center at ISU, the Southern Iowa Forage and Livestock Committee, AgriLabs, and Dow AgroSciences.

Participants who sign up for the whole program will receive a reduced rate of \$80 for all five modules. This includes a meal and all educational materials at each workshop (including the Gerrish series). Workshops will run from 10 a.m. to 2:30 p.m. (August Gerrish workshops will have different schedules.)

Participants are urged to attend all sessions, but fees for individual sessions are available. Register by June 13 by contacting the Lucas County Extension office 641-774-2016, or e-mail Joe Sellers at [sellers@iastate.edu](mailto:sellers@iastate.edu).

**JOIN US FOR GREENHORN GRAZING!**



For more information about Greenhorn Grazing 2014 or to register, please contact:

- Joe Sellers, ISU Extension Livestock Program Specialist at [sellers@iastate.edu](mailto:sellers@iastate.edu) 641-203-1270
- Lucas County Extension office, 48293 HyVee Rd, Chariton, IA 50049, 641-774-2016)
- Brian Peterson at 641-344-1026

Greenhorn Grazing is sponsored by:



Photos Courtesy of the USDA-NRCS

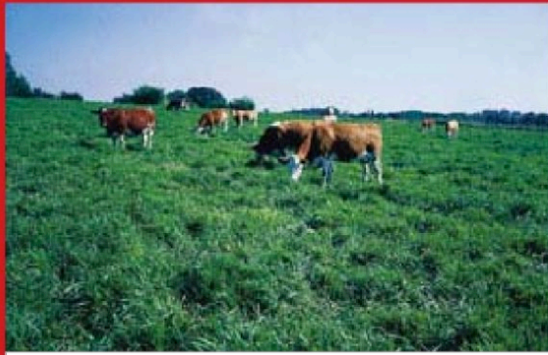
**Sharpen your grazing management skills with the 2014 series**

# Greenhorn Grazing



An introduction to management intensive and rotational grazing for producers who want to optimize forage and livestock production, increase market access, and conserve natural resources.

**IOWA STATE UNIVERSITY**  
Extension and Outreach



### WHAT IS GREENHORN GRAZING?

This series was developed by ISU Extension, Natural Resources Conservation Service, and industry staff to deliver timely materials and hands-on workshops for producers interested in improving their forage management system and moving to a more controlled, management intensive grazing plan.

### WHO SHOULD PARTICIPATE?

Greenhorn Grazing will cover concepts relevant to all producers of grass-based livestock, whether you are into beef, dairy, sheep, or otherwise.

All that's required is the desire to optimize the production, marketing, and stewardship aspects of your grazing operation.

### WHERE WILL THE PROGRAM OCCUR?

Greenhorn Grazing 2014 will be in Lucas County at the McNay Research farm, and at local farm sites.

# Greenhorn Grazing

## 2014 PROGRAM SCHEDULE

### Module 1

*Wednesday June 18 (10-2:30)*

#### In the Classroom

- Why is forage management important?
- Basics of plant growth
- Planning your grazing system
- Animal and plant productivity

#### In the Field

- Tour pasture at McNay
- Basic grazing planning
- Body condition scoring

### Module 2

*Tuesday, July 15 (10-2:30)*

#### In the Classroom

- Fencing and watering systems
- Minerals
- Animal health, insect control

#### In the Field

- Fencing demo
- Pasture condition scoring
- Managing fescue

### Module 3

*Jim Gerrish series*

**Choose location that fits your schedule**

**August 18** (McNay and Jeff Lutz farm)

**August 19** (Hostetler farm, Clarke County fairgrounds, Justin Rowe farm)

**August 20** (Maxwell Community Center and Bruce Carney farm)

### Module 4

*Thursday, October 23 (10-2:30)*

#### In the Classroom

- Weed and brush management
- Parasite control in beef and sheep
- Grazing fees, rental rates, and contracts

#### In the Field

- Tour local farm managing grazing to improve habitat
- Weed and brush control discussion
- Impact of grazing on plant diversity

### Module 5

*Tuesday, November 18 (10-2:30)*

#### In the Classroom

- Winter feeding plans – stored feed, stockpiled grass, and cornstalks
- Cull cow marketing/replacement heifer strategies
- Cow and calf rations

#### In the Field

- Tour stockpiled grass pastures at McNay farm
- Stockpiled grazing discussion
- Risk management with winter grazing

