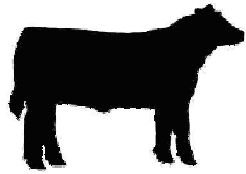


Iowa Sire Profit Comparison Project Ranking of Sires with 5 or more Progeny



TCSCF

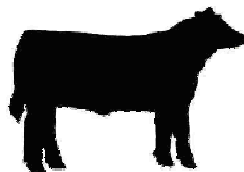
2006 Tri-County Steer Carcass Futurity Cooperative

In cooperation with



Tri-County Consignor or Bull Owner	Sire Name or ID Number	Progeny Number	Adj. Final Wt.	Ave. Disp. Score	Feed to Gain	Overall ADG	Hot Carcass Wt.	Dress %	Fat Cover	Ribeye Area	Yield Grade	% Low Choice or better	% Upper 2/3s Choice or better	Cost of Indiv. Health Trts.	SPA Calf Value
Angus Sires															
Silver Creek Farms	Lemmon Ext L52	5	1297	1.70	7.46	3.50	805	62.0%	0.58	13.2	3.27	100.0%	40.0%	\$0.00	\$440.81
Henry Wilkie	Cedar Creek Explorer 2006	12	1286	2.18	6.97	3.64	800	62.2%	0.41	12.7	3.05	100.0%	33.3%	\$1.14	\$445.79
McCord W. Hall	Connealy Lead On	11	1313	1.52	6.93	3.38	813	61.9%	0.45	14.0	2.63	90.9%	45.5%	\$0.00	\$464.99
McVae & David Wilt	Wilt New Design 591	5	1235	1.30	6.83	3.45	759	61.5%	0.50	12.8	2.92	100.0%	40.0%	\$0.00	\$400.67
Scott Dougherty	K C Prime Time 6029 95	6	1294	1.53	6.94	3.69	796	61.5%	0.47	13.0	2.98	100.0%	33.3%	\$0.00	\$401.52
Bryan Hilsabeck	L C R Precision 101	8	1276	1.44	6.43	3.76	796	62.3%	0.48	12.9	3.13	100.0%	25.0%	\$0.39	\$398.41
NW GA Research & Education Ctr., Jim Husz	B/R New Design 323-9150	15	1266	1.38	6.57	3.64	771	60.9%	0.48	12.8	3.05	100.0%	80.0%	\$1.07	\$403.25
NW Georgia Research & Education Ctr.	King Kahn B100	27	1190	1.31	6.91	3.40	730	61.3%	0.47	12.8	2.78	88.9%	44.4%	\$1.43	\$410.53
Mill Creek Farms, LLC / Robert Phillips	S S F 616 102	7	1288	1.62	5.66	3.92	807	62.6%	0.43	13.6	2.68	100.0%	0.0%	\$0.00	\$426.14
Llangollen Farm	OT17	7	1329	1.10	6.75	4.18	826	62.2%	0.48	12.6	3.41	100.0%	71.4%	\$0.00	\$443.71
Ronald DeHart	Rito 2A70 of Rita 9D31 205	7	1196	1.63	6.27	3.32	746	62.4%	0.45	12.9	2.81	100.0%	71.4%	\$0.00	\$428.44
William Clay Sims	BTO 33G Scotch Cap B11	11	1250	1.31	6.47	3.43	778	62.2%	0.47	13.1	2.87	90.9%	36.4%	\$6.97	\$382.63
Cold Springs Angus Farm/John Stuedeman	Twin Valley 036 2400 G	24	1234	1.12	6.55	3.58	760	61.5%	0.48	12.9	2.94	100.0%	75.0%	\$6.28	\$393.97
Jeff Pepper	323	8	1144	1.46	6.60	3.36	713	62.4%	0.43	12.7	2.71	100.0%	25.0%	\$0.00	\$361.32
Trails End Farm/Nate/Larry Jones	Springfield 6148 6081	23	1117	1.55	7.52	3.00	685	61.3%	0.44	11.9	2.80	95.7%	60.9%	\$0.00	\$389.81
Fall-Line Farms	G A R 6807 Traveler 4144	7	1180	1.32	6.88	3.20	722	61.1%	0.41	12.5	2.75	100.0%	0.0%	\$8.39	\$400.50
Rusty Thomson	24	5	1308	1.20	6.81	3.78	813	62.2%	0.37	14.2	2.41	60.0%	0.0%	\$0.00	\$452.46
Richard Crow	RR9191	9	1214	1.70	7.64	2.95	758	62.4%	0.47	12.0	3.15	100.0%	55.6%	\$0.00	\$454.04
Larry Thomas	C C F Precision 303	6	1208	1.46	6.05	3.71	748	61.9%	0.38	12.5	2.70	83.3%	33.3%	\$7.53	\$377.39
Larell Wilkinson	LCW Majestic Design 036-L13	10	1194	1.53	6.01	3.66	741	62.1%	0.38	12.9	2.60	100.0%	50.0%	\$2.24	\$377.64
Joe & Judi Jones	Spectrum	6	1138	1.22	6.55	3.39	686	60.4%	0.49	12.5	2.79	100.0%	100.0%	\$2.93	\$357.84
Tim Sutphin	81	5	1368	1.20	6.45	3.88	839	61.2%	0.54	13.2	3.23	100.0%	60.0%	\$0.00	\$443.61
Rocky Creek Farms/ William Womack	G A R Retail Product	5	1244	1.33	6.46	3.47	770	62.0%	0.42	12.8	2.76	100.0%	60.0%	\$9.62	\$390.66
Plumfield Farm	YON New Design M189	33	1225	1.71	7.16	3.31	747	61.0%	0.40	13.1	2.58	90.9%	39.4%	\$1.27	\$416.70
David Loutzenhiser	167	15	1156	1.73	6.62	3.23	727	62.8%	0.44	13.1	2.67	100.0%	53.3%	\$2.67	\$367.62
Robert Wilson	Circle A New Design 0109	6	1208	1.96	6.25	3.67	753	62.3%	0.41	12.5	2.89	100.0%	66.7%	\$0.00	\$418.93
Joe & Judi Jones	176	30	1151	1.46	6.59	3.44	717	62.3%	0.45	12.6	2.77	100.0%	40.0%	\$5.05	\$379.02
Home Park Farm	378	12	1174	1.75	6.12	3.54	713	60.7%	0.49	11.9	3.06	100.0%	83.3%	\$6.03	\$352.44
Jim Husz	1149	10	1261	1.32	6.55	3.39	777	61.6%	0.48	12.9	3.03	100.0%	40.0%	\$0.00	\$420.27
Fall-Line Farms	S A F 598 Bando 5175	9	1264	1.30	7.42	3.41	777	61.5%	0.47	12.9	2.96	66.7%	33.3%	\$23.64	\$430.17
Bar-C Farm / W. Max Campbell	37	6	1365	2.16	6.22	4.15	848	62.1%	0.49	13.3	3.17	83.3%	33.3%	\$0.00	\$426.16
Rocky Creek Farms	R C F Rock Ambush 55F	19	1239	1.38	6.23	3.66	761	61.4%	0.46	12.5	3.02	100.0%	78.9%	\$0.59	\$343.79
Ron Dunphy/Dr. Katzer	83	34	1201	1.53	6.34	3.26	745	62.0%	0.38	13.0	2.56	79.4%	5.9%	\$10.57	\$374.03
Eddie Bradley	J K F Rito 00X4 of 4B47	5	1159	1.17	7.82	2.60	715	61.6%	0.43	12.8	2.67	80.0%	60.0%	\$20.87	\$423.29
Gardiner Angus/Hoffman Angus-Multi Consignor	G A R Grid Maker	31	1228	1.43	6.73	3.47	758	61.7%	0.47	13.1	2.81	80.6%	22.6%	\$4.74	\$407.86
Eddie Bradley	Rito 9311 of 4M7 BRND 036	14	1249	1.65	7.22	2.96	778	62.2%	0.49	12.7	3.05	100.0%	28.6%	\$6.67	\$446.21
Rex Frieden	K739	7	1224	1.62	7.31	2.95	772	63.1%	0.41	13.0	2.65	57.1%	0.0%	\$0.00	\$452.69
Deer Creek Farm / Mark Campbell	Rito 2I2 of Rita 9D24 616	9	1176	1.37	7.15	3.38	725	61.7%	0.56	12.9	2.96	100.0%	33.3%	\$1.88	\$400.40
Harris Livestock	B Bart	18	1203	1.44	6.31	3.70	736	61.2%	0.47	12.2	3.05	100.0%	66.7%	\$4.01	\$356.81
Rocky Creek Farms/ William Womack	R C F Max X77 35E	12	1244	1.30	5.97	3.77	752	60.5%	0.44	12.9	2.81	100.0%	75.0%	\$0.83	\$333.37
Carrier Angus Farms	Jacs Precision 2203	6	1306	1.63	6.24	3.62	798	61.1%	0.36	13.3	2.64	83.3%	33.3%	\$6.19	\$393.62
Eddie Bradley	Rito 2X15 of Rita 8Z22 EXP	8	1155	1.85	6.80	3.16	715	62.0%	0.49	12.6	2.88	100.0%	75.0%	\$0.00	\$387.63
Oakalla Valley Partnership	S S Objective T510 OT26	9	1171	1.44	7.46	3.28	721	61.5%	0.42	12.2	2.78	100.0%	44.4%	\$1.61	\$403.99
Todd Dunphy	15	7	1244	1.50	6.53	3.33	778	62.5%	0.56	12.7	3.25	100.0%	71.4%	\$26.67	\$372.24
James B. Gregory, Jr.	Daltons Backstop 8205	10	1228	1.47	6.57	3.68	739	60.2%	0.56	12.6	3.19	100.0%	80.0%	\$9.42	\$428.99
Brian Hunt	G A R Precision 9931	41	1195	1.71	6.19	3.57	743	62.2%	0.50	12.5	3.06	97.6%	68.3%	\$1.61	\$378.54

Iowa Sire Profit Comparison Project Ranking of Sires with 5 or more Progeny



TCSCF

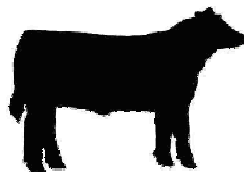
2006 Tri-County Steer Carcass Futurity Cooperative

In cooperation with



Tri-County Consignor or Bull Owner	Sire Name or ID Number	Progeny Number	Adj. Final Wt.	Ave. Disp. Score	Feed to Gain	Overall ADG	Hot Carcass			Ribeye Area	Yield Grade	% Low Choice or better	% Upper 2/3s Choice or better	Cost of Indiv. Health Trts.	SPA Calf Value
							Wt.	Dress %	Fat Cover						
Warden & Richards	IRONWOOD AMBUSH 315 0185	5	1144	2.02	6.90	3.46	723	63.1%	0.53	12.4	3.07	80.0%	60.0%	\$0.62	\$365.28
Fall-Line Farms	Sitz Alliance 6595	7	1325	1.17	7.12	3.41	818	61.7%	0.46	12.4	3.20	60.0%	0.0%	\$8.39	\$431.46
Home Park Farm	174	16	1194	1.61	6.35	3.64	726	60.8%	0.57	12.0	3.26	100.0%	68.8%	\$3.53	\$362.49
NW Georgia Research & Education Ctr.	Bricton Fix IT 2214	10	1200	1.55	6.75	3.51	746	62.1%	0.48	12.8	2.85	80.0%	10.0%	\$0.00	\$419.21
Ricky Conner	Whitmire Big Dip 9461	6	1283	1.25	7.38	2.98	803	62.6%	0.48	12.7	3.10	83.3%	50.0%	\$0.00	\$431.05
Richard Crow	Rotert Checkmate 8021	10	1215	1.73	8.24	2.98	746	61.4%	0.40	12.6	2.80	90.0%	30.0%	\$0.00	\$431.87
Brian Hunt	G A R New Design V8	71	1207	1.79	6.37	3.56	744	61.7%	0.49	12.4	3.04	97.2%	63.4%	\$2.75	\$387.08
Bon View Farms/Select Sires-Multi Consignor	Bon View Spectrum 1176	18	1146	1.38	7.21	2.91	710	61.9%	0.48	11.9	3.06	100.0%	33.3%	\$7.50	\$383.91
Lakeview Farms Angus	Hillside New Design 6475	13	1213	1.52	6.05	3.68	744	61.3%	0.48	12.4	3.05	100.0%	61.5%	\$0.00	\$352.37
Larell Wilkinson	Ironwood Exacto S E 0344	19	1211	1.73	6.51	3.67	758	62.6%	0.50	12.3	3.16	94.7%	36.8%	\$2.09	\$399.00
Don Stuckey	L T 598 Bando 9074	5	1254	1.33	6.69	3.31	772	61.6%	0.53	12.8	3.11	100.0%	20.0%	\$4.96	\$394.54
Warden & Richards	IRONWOOD DESIGN 3U 0350	10	1181	2.40	6.58	3.98	723	61.2%	0.55	11.9	3.18	90.0%	10.0%	\$0.31	\$355.24
Virginia Whitner/Sue Lewis	Connealy Freightliner	6	1220	1.32	6.14	3.52	750	61.5%	0.53	13.2	2.88	100.0%	16.7%	\$0.00	\$375.83
Turner Callaway	A Plus Prime 9070	17	1155	1.09	6.19	3.43	710	61.5%	0.36	12.3	2.50	82.4%	35.3%	\$0.00	\$356.11
Tim Dunphy	SS	11	1166	1.66	6.09	3.44	732	63.2%	0.37	13.1	2.43	81.8%	36.4%	\$8.67	\$367.40
NW Georgia Research & Education Ctr.	UG New Design 036 0546	5	1111	2.00	6.66	3.36	700	63.2%	0.54	12.0	3.08	80.0%	60.0%	\$16.08	\$360.18
Karl Kenagy	38	6	1329	1.57	6.87	3.75	817	61.3%	0.45	13.3	2.89	83.3%	0.0%	\$0.00	\$426.86
Gretsch Farms	BAF Cashflow 3196	10	1130	1.78	6.45	3.28	691	61.2%	0.47	12.5	2.77	95.0%	50.0%	\$1.22	\$349.03
William E. Hesel	HE	9	1059	1.54	6.59	2.96	647	61.1%	0.52	11.8	2.92	100.0%	44.4%	\$3.33	\$328.38
Rocky Creek Farms/ William Womack	R C F Rito 8E8 2D	11	1204	1.31	6.40	3.77	735	61.1%	0.51	12.0	3.14	100.0%	45.5%	\$12.05	\$358.67
Rocky Creek Farms	R C F Rock Ambush 53F	10	1219	1.47	6.22	3.83	750	61.5%	0.52	12.5	3.15	100.0%	90.0%	\$5.05	\$330.86
Joe Davis	ID4 West	5	1038	1.33	6.89	3.07	645	62.2%	0.44	12.0	2.57	100.0%	80.0%	\$0.00	\$368.23
William Clay Sims	Twin Hills Lucys Boy 2261	7	1188	1.33	6.23	3.46	734	61.8%	0.55	12.7	2.97	85.7%	14.3%	\$0.00	\$370.24
Davis Angus Farm	CH	12	1073	1.32	6.99	2.99	662	61.7%	0.33	12.4	2.26	91.7%	25.0%	\$1.00	\$355.59
Frenchfield Farms	Rito 9W29 of 2G2 6148	23	1208	1.13	6.64	3.47	738	61.0%	0.47	12.7	2.83	82.6%	4.3%	\$4.56	\$432.71
Turner Callaway	B A R Ext Traveler 205	14	1184	1.07	6.65	3.42	726	61.4%	0.46	11.9	2.99	100.0%	42.9%	\$0.00	\$379.42
Home Park Farm	409	16	1210	2.03	6.43	3.62	738	61.0%	0.48	12.2	3.08	100.0%	37.5%	\$7.44	\$374.84
David Legg Farm	R&R Right Time 833	12	1285	1.83	6.25	3.32	796	61.9%	0.53	14.1	2.77	50.0%	0.0%	\$2.23	\$403.05
Davies Farms	DF Magnum M164	9	1134	2.07	7.40	3.25	703	62.0%	0.53	12.8	2.91	88.9%	33.3%	\$1.39	\$380.18
Bryan & Alan Hilsabeck, Lueken Angus Farm	Bon View New Design 1407	18	1198	1.54	6.57	3.51	729	60.9%	0.49	12.4	2.99	100.0%	72.2%	\$2.55	\$390.68
Alex Turner	YON NEW DESIGN 036 K45	6	1106	1.26	6.80	3.27	670	60.6%	0.47	12.8	2.58	100.0%	33.3%	\$0.00	\$370.07
Gardiner Angus/VB Lawlis-Multi Consignor	G A R Expectation 4915	72	1232	1.48	6.61	3.63	758	61.6%	0.45	12.5	3.01	86.1%	31.9%	\$0.14	\$395.46
Matthew Jones Farm	Bricton New Design 1019	8	1210	1.79	6.66	3.35	743	61.4%	0.40	12.4	2.80	87.5%	25.0%	\$1.75	\$385.96
David Loutzenhiser	39	36	1193	1.52	6.51	3.26	739	62.0%	0.41	13.1	2.67	83.3%	22.2%	\$2.78	\$373.81
McBee Angus	M148	7	1118	1.56	6.96	3.07	675	60.4%	0.39	12.2	2.47	85.7%	57.1%	\$20.99	\$395.27
Eddie Bradley	Rito 0117 9A16	8	1190	1.64	6.90	3.28	733	61.6%	0.46	12.6	2.84	100.0%	25.0%	\$0.00	\$400.92
Joe & Judi Jones	18	6	1187	1.22	6.24	3.35	733	61.7%	0.35	12.4	2.71	100.0%	16.7%	\$0.00	\$389.62
William Clay Sims	Twin Hills New Design 1030	8	1231	1.43	6.32	3.27	768	62.4%	0.39	13.6	2.53	62.5%	0.0%	\$9.39	\$381.46
McCord W. Hall	Plowman 1627 of Millbrae SAR	24	1281	1.27	7.40	3.33	783	61.1%	0.46	12.6	3.00	95.8%	33.3%	\$4.28	\$425.66
Joan Liebrecht	2900	14	1260	1.48	7.99	3.15	771	61.1%	0.41	12.8	2.78	71.4%	35.7%	\$6.11	\$457.67
NW Georgia Research & Education Ctr.	UG Expectation 2511	8	1105	1.65	7.03	3.12	673	60.9%	0.46	11.3	3.08	100.0%	62.5%	\$3.63	\$369.78
Bart Renkoski	X L Bando 598 M04	8	1304	1.31	6.56	3.81	812	62.2%	0.55	12.6	3.38	62.5%	25.0%	\$1.31	\$408.31
Lawrence Risse/Granite Falls Farms	J T S Emuten Cornhusker 22S1	9	1128	1.41	7.93	2.62	701	62.1%	0.50	12.3	2.83	88.9%	33.3%	\$10.57	\$410.42
Eddie Bradley	Rito 616 of 4B20 6807	8	1249	1.28	6.66	3.38	770	61.6%	0.53	13.1	3.02	100.0%	50.0%	\$6.23	\$403.20
C. W. Hook	Circle A Direction 2539	5	1212	2.05	6.58	3.33	757	62.5%	0.49	12.7	2.94	100.0%	0.0%	\$13.34	\$411.38
LaReil Wilkinson	366	5	1283	1.40	6.86	4.14	780	60.8%	0.59	12.7	3.28	100.0%	40.0%	\$1.70	\$421.59
Jerry Graybeal	131	7	1129	1.76	5.94	3.40	692	61.3%	0.49	12.5	2.83	100.0%	71.4%	\$0.00	\$384.46

Iowa Sire Profit Comparison Project Ranking of Sires with 5 or more Progeny



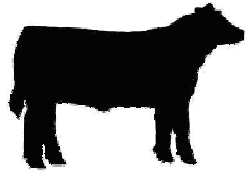
TCSCF
2006 Tri-County Steer Carcass Futurity Cooperative

In cooperation with



Tri-County Consignor or Bull Owner	Sire Name or ID Number	Progeny Number	Adj. Final Wt.	Ave. Disp. Score	Feed to Gain	Overall ADG	Hot Carcass			Ribeye Area	Yield Grade	% Low Choice or better	% Upper 2/3s Choice or better	Cost of Indiv. Health Trts.	SPA Calf Value
							Wt.	Dress %	Fat Cover						
Carrier Angus Farms	S A V 5175 Bando 2055 T	11	1325	1.35	6.34	3.91	803	60.6%	0.51	13.3	3.06	90.9%	18.2%	\$0.00	\$418.79
Bar T Ranch	Black Crest Bando 104F Et	10	1284	1.91	7.59	3.18	798	62.1%	0.54	12.5	3.34	80.0%	10.0%	\$0.00	\$420.90
Bar W/Paul Wilkie	C A R Ext 739	10	1065	1.26	6.79	3.40	661	62.1%	0.41	11.4	2.79	100.0%	70.0%	\$0.00	\$377.70
NW Georgia Research & Education Ctr.	Lemmon KCC Precision B134	7	1150	1.33	7.32	3.23	703	61.1%	0.62	12.2	3.22	100.0%	14.3%	\$0.00	\$401.14
Larry & Marlene James	Nichols Extra K337	7	1247	1.21	6.34	3.20	767	61.6%	0.33	13.7	2.30	42.9%	0.0%	\$7.46	\$382.07
David Loutzenhiser	6012	27	1169	1.55	6.62	3.30	723	61.8%	0.44	13.1	2.62	96.3%	25.9%	\$2.22	\$361.34
Beaverdale Farms	H60 of 5304 GAR Commitment	35	1218	1.88	6.57	3.25	748	61.4%	0.42	13.4	2.57	74.3%	11.4%	\$3.76	\$399.40
Bar-C Farm / W. Max Campbell	46	11	1280	1.79	6.31	3.67	795	62.1%	0.49	13.0	3.03	100.0%	18.2%	\$0.00	\$418.28
Tom Enarson	Ironwood ND 9399 3332	11	1171	1.44	6.67	3.34	729	62.3%	0.50	12.9	2.87	90.9%	9.1%	\$0.00	\$386.96
McDonald	2145	8	1310	1.26	7.48	3.23	825	63.0%	0.58	12.8	3.41	87.5%	12.5%	\$0.00	\$446.32
NW Georgia Research & Education Ctr.	WAF 9M9 690	27	1186	1.67	7.50	3.04	726	61.2%	0.51	12.0	3.12	88.9%	25.9%	\$2.76	\$423.91
Bishop Branch Farm/Joey Link	1C3	9	1182	1.35	7.08	3.01	726	61.5%	0.42	11.5	3.05	77.8%	22.2%	\$17.39	\$401.72
Thomas Fulcher	O H Prompt Girl 305716	10	1092	1.71	8.94	2.75	672	61.5%	0.51	11.3	3.19	100.0%	70.0%	\$0.00	\$428.06
Woodland/Woodhill/Leachman Angus Farms-Multi Consignors	Bon View New Design 878	53	1181	1.67	6.79	3.33	730	61.8%	0.49	12.4	2.98	88.7%	34.0%	\$1.48	\$388.99
David Loutzenhiser	34	23	1111	1.56	6.62	3.14	678	61.2%	0.46	12.0	2.87	95.7%	30.4%	\$0.22	\$341.27
Bar T Ranch	9120	10	1192	1.34	7.20	2.70	747	62.7%	0.37	12.0	2.83	50.0%	0.0%	\$4.00	\$434.01
Larell Wilkinson	LCW Majestic Design 715-L42	13	1233	1.39	6.37	3.71	761	61.7%	0.48	12.8	2.97	76.9%	23.1%	\$0.00	\$402.48
Eddie Bradley	J F Traveler 5201	9	1134	1.30	6.97	3.03	700	61.7%	0.57	12.1	3.13	88.9%	11.1%	\$2.41	\$360.52
Ronald DeHart	Ellerslie Right Smart 8106	6	1177	1.78	6.34	3.33	722	61.3%	0.52	12.3	3.08	100.0%	50.0%	\$0.00	\$399.09
McClure Farm	C C C Saugahatchee 095	7	1158	1.45	6.17	3.58	710	61.3%	0.39	12.4	2.74	100.0%	28.6%	\$0.00	\$350.36
Magnolia Hill Farm	YON	16	1162	2.66	6.06	3.29	717	61.8%	0.45	12.7	2.73	75.0%	18.8%	\$13.07	\$353.87
Joe & Judi Jones	199	15	1143	1.13	6.46	3.16	713	62.4%	0.41	12.7	2.64	86.7%	33.3%	\$0.00	\$388.39
Harris Livestock	W K U Doctor Pepper 0202	24	1173	1.65	6.30	3.50	721	61.4%	0.45	12.5	2.83	95.8%	20.8%	\$0.65	\$354.90
Eddie Bradley	Gibb Iroquois 9111	6	1220	1.49	6.85	3.24	765	62.7%	0.66	12.4	3.53	100.0%	0.0%	\$13.83	\$422.90
Rocky Creek Farms/ William Womack	R C F Traveler 234D 44E	17	1155	1.69	6.31	3.31	714	61.8%	0.42	12.5	2.74	100.0%	70.6%	\$0.00	\$342.97
Archie Davis	Davis New Design 902	22	1153	1.76	6.66	3.21	717	62.2%	0.47	12.1	3.02	100.0%	68.2%	\$0.00	\$344.58
Warden & Richards	Ironwood Cristo 6370 1101	10	1137	1.64	6.47	3.59	684	60.2%	0.50	12.3	2.82	90.0%	30.0%	\$2.24	\$342.23
Darrell Kentner	Nichols Black Ink K691	5	1172	1.62	7.16	3.32	701	59.8%	0.34	12.7	2.46	80.0%	0.0%	\$0.00	\$386.44
Bar T Ranch	3	10	1212	1.36	7.03	2.93	746	61.6%	0.43	11.9	3.03	70.0%	10.0%	\$1.80	\$417.00
Warden & Richards	IRONWOOD CRISTO PA 8223	9	1120	2.11	6.85	3.43	701	62.6%	0.54	12.2	3.05	100.0%	11.1%	\$0.57	\$356.08
NW Georgia Research & Education Ctr.	Nelson Blackbird 232	9	1167	1.75	7.24	3.10	725	62.1%	0.49	12.0	3.05	88.9%	11.1%	\$1.78	\$417.13
Bishop Branch Farm/Joey Link	9I3	13	1139	1.46	6.89	3.18	699	61.4%	0.37	11.6	2.77	53.8%	0.0%	\$0.85	\$390.62
Tommy Burns	Mills Illini 550	6	1123	1.25	6.50	3.25	687	61.2%	0.54	11.8	3.33	100.0%	66.7%	\$2.73	\$378.16
Brian Hunt	BYGO	28	1078	1.64	7.28	2.95	673	62.4%	0.48	11.7	2.89	75.0%	14.3%	\$4.63	\$392.66
Eddie Bradley	Rito 5TR8 of Rita 3X12 RRT	11	1110	1.41	7.36	2.76	690	62.2%	0.44	12.4	2.73	72.7%	18.2%	\$13.59	\$397.88
Gail & Marshall Miller	Nichols Ext M906	5	1221	1.90	7.22	3.48	755	61.8%	0.35	13.5	2.40	20.0%	0.0%	\$0.00	\$400.90
Cold Spring Angus Farm	JTS Cold Spring Focus 29c2	5	1164	1.20	6.45	3.43	721	62.0%	0.64	12.2	3.34	100.0%	20.0%	\$6.77	\$370.04
Carl Tessmer	2721 K	8	1394	NA	6.44	4.00	861	61.8%	0.58	13.2	3.46	100.0%	12.5%	\$3.00	\$403.37
Mill Creek Farms / Robert A. Phillips	MCF 2	6	1148	1.92	5.87	3.52	719	62.7%	0.44	13.3	2.66	83.3%	50.0%	\$0.00	\$354.62
Ancil Johnson	L F Traveler 016	10	1150	1.75	7.60	3.26	708	61.6%	0.43	12.3	2.84	90.0%	20.0%	\$0.00	\$392.82
NW Georgia Research & Education Ctr.	Kahn Ambush B126	27	1173	1.81	7.57	2.97	730	62.2%	0.57	12.7	3.09	70.4%	22.2%	\$2.76	\$426.83
Jeff Pepper	A A F Dateline 323	12	1099	1.69	7.12	3.15	688	62.7%	0.53	12.3	2.91	91.7%	16.7%	\$1.31	\$356.62
Jerry Graybeal	113	9	1157	1.69	6.01	3.35	714	61.8%	0.46	12.3	2.88	100.0%	22.2%	\$0.00	\$386.60
Home Park Farm/CR Conklin	426	21	1203	1.54	6.58	3.68	741	61.5%	0.50	12.4	3.04	90.5%	33.3%	\$1.03	\$380.11
Archie Davis	K A F Max 307	11	1213	1.54	6.65	3.50	746	61.5%	0.50	11.9	3.34	100.0%	81.8%	\$1.17	\$352.14
Anson Minton	Echo Ridge Rito 9K60 7931	8	1252	1.60	7.12	3.72	778	62.2%	0.55	12.4	3.48	100.0%	50.0%	\$0.00	\$435.87
Home Park Farm/CR Conklin	476	31	1186	1.71	6.61	3.44	728	61.4%	0.46	12.0	3.04	83.9%	32.3%	\$3.82	\$376.01

Iowa Sire Profit Comparison Project Ranking of Sires with 5 or more Progeny



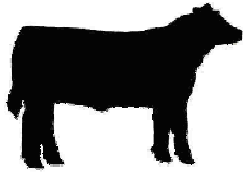
TCSCF
2006 Tri-County Steer Carcass Futurity Cooperative

In cooperation with



Tri-County Consignor or Bull Owner	Sire Name or ID Number	Progeny Number	Adj. Final Wt.	Ave. Disp. Score	Feed to Gain	Overall ADG	Hot Carcass			Ribeye Area	Yield Grade	% Low Choice or better	% Upper 2/3s Choice or better	Cost of Indiv. Health Trts.	SPA Calf Value
							Wt.	Dress %	Fat Cover						
Tommy Jack Shoun	M M Stockman 365-5265	37	1163	1.82	6.97	3.55	714	61.4%	0.46	12.4	2.98	100.0%	51.4%	\$13.66	\$384.03
NW Georgia Research & Education Ctr.	O A F Right Time 023 5260	15	1171	1.43	7.32	3.11	715	61.1%	0.49	11.8	3.12	86.7%	33.3%	\$0.00	\$405.90
NW Georgia Research & Education Ctr.	8610	8	1078	1.19	7.24	3.11	649	60.2%	0.41	12.3	2.55	100.0%	37.5%	\$0.00	\$405.03
Magnolia Hill Farm	M305	19	1192	2.20	6.25	3.62	734	61.6%	0.57	12.4	3.20	84.2%	5.3%	\$2.29	\$368.55
Warden & Richards	IRONWOOD CRISTO B2 8218	11	1143	2.10	6.74	3.49	702	61.4%	0.49	12.2	2.89	81.8%	9.1%	\$3.74	\$363.07
Warden Thomas	Flanders	5	1234	1.40	6.36	3.59	766	62.1%	0.50	13.6	2.78	20.0%	0.0%	\$0.00	\$407.64
Brian Hunt	Denny	43	1148	1.73	7.23	3.14	711	61.8%	0.49	11.9	3.07	88.4%	27.9%	\$1.23	\$380.93
Dubose Cattle Co	ANDUB	7	1214	1.65	7.36	3.07	749	61.7%	0.39	13.3	2.49	57.1%	0.0%	\$0.00	\$445.94
Joe Griffith	R L C Mr Trend 581	12	1255	1.21	6.28	3.55	776	61.8%	0.53	12.4	3.24	75.0%	0.0%	\$4.33	\$379.51
Joe Davis	YON SOUTHERN ROCK N69	8	1181	1.78	6.86	3.31	704	59.6%	0.48	12.5	2.81	62.5%	12.5%	\$3.32	\$384.23
David Loutzenhiser	4060	34	1107	1.55	6.55	3.13	681	61.5%	0.50	12.0	3.04	97.1%	29.4%	\$3.68	\$348.68
Clathworthy Farms/Alex Turner	Turner Ideal 0104	8	1135	1.10	6.60	3.51	702	61.9%	0.46	12.5	2.70	100.0%	12.5%	\$1.67	\$405.83
William Poole	R&K Priority 1072	5	1218	1.50	6.45	3.33	750	61.6%	0.40	13.1	2.61	60.0%	0.0%	\$31.61	\$402.03
Brian Hunt	Low Gap Gridmaker 0281	24	1204	1.89	6.10	3.70	738	61.3%	0.48	12.4	2.99	91.7%	25.0%	\$1.87	\$388.07
Paul Ackley	RCC	18	1145	1.94	6.84	3.17	712	62.2%	0.57	11.9	3.32	88.9%	33.3%	\$0.00	\$347.33
Rosenbaum Farms	442	11	1137	1.42	6.95	3.00	699	61.5%	0.45	12.1	2.86	81.8%	0.0%	\$15.83	\$402.65
NW Georgia Research & Education Ctr.	WAF 556 West 649	7	1194	1.10	8.11	3.19	716	60.0%	0.35	12.5	2.46	57.1%	28.6%	\$3.97	\$460.12
Paul Wilkie	YON Expectation M39	9	1276	1.72	6.94	3.65	784	61.5%	0.52	12.4	3.31	100.0%	36.8%	\$10.93	\$432.01
50%South Ozarks Premier Beef Marketers, LLC	Really Windy	6	1320	1.10	6.57	3.57	823	62.4%	0.48	12.9	3.24	66.7%	16.7%	\$0.00	\$455.56
Larell Wilkinson	Ironwood Stampede2 9366	13	1276	1.21	6.13	3.90	761	59.6%	0.43	12.7	2.91	92.3%	0.0%	\$0.89	\$411.87
Brian Hunt	Bubba	11	1231	1.33	7.04	3.58	749	61.0%	0.50	11.9	3.28	90.9%	0.0%	\$3.04	\$388.85
Douglas Angus/ Don Douglas	M A R Sitz Rainmaker 0066	7	1101	1.75	7.03	2.99	664	60.2%	0.46	11.1	3.04	85.7%	28.6%	\$5.83	\$344.17
Joan Liebrecht	BF	8	1220	1.33	7.58	3.22	752	61.6%	0.37	12.6	2.66	62.5%	12.5%	\$0.00	\$435.80
Oakalla Valley Partnership	Dipert W W Rito 328-603	13	1177	1.33	7.10	2.97	737	62.7%	0.48	11.9	3.10	69.2%	0.0%	\$23.05	\$381.91
Allen Beer	104	8	1144	1.61	7.00	3.27	695	60.7%	0.44	11.7	3.03	75.0%	12.5%	\$9.33	\$382.75
Davis Angus Farm	DM	20	1062	1.19	6.99	3.29	649	61.0%	0.47	11.0	3.07	100.0%	75.0%	\$2.55	\$342.29
Warden Thomas	Ohio AN	7	1176	1.81	6.74	3.11	739	62.8%	0.50	13.1	2.74	28.6%	0.0%	\$17.06	\$414.83
Tim Dunphy	Fame	7	1177	1.73	6.53	3.24	710	60.3%	0.38	13.0	2.42	57.1%	42.9%	\$25.16	\$362.59
NW Georgia Research & Education Ctr.	S A F Easy Fortune	9	1235	1.49	7.35	3.22	746	60.4%	0.49	11.7	3.21	88.9%	11.1%	\$5.42	\$423.58
Roger McMartin	7527	8	1087	1.75	7.74	2.94	646	59.4%	0.50	11.5	2.92	100.0%	12.5%	\$16.13	\$360.62
Brian Hunt	Windy Knob Halfback J6	13	1126	1.82	8.03	2.96	709	63.0%	0.69	12.2	3.46	100.0%	15.4%	\$0.00	\$426.96
Davies Farms	GAR Westwind 7966	18	1211	1.75	8.44	2.96	747	61.7%	0.45	11.3	3.24	88.9%	50.0%	\$0.00	\$435.32
Eddie Bradley	Baf Roller 8321	11	1191	1.30	6.77	3.25	742	62.3%	0.57	12.4	3.23	90.9%	45.5%	\$7.50	\$364.60
Brian Hunt	Low Gap Royal 38 W W 027	7	1149	1.96	7.39	3.38	701	61.0%	0.62	12.2	3.24	85.7%	42.9%	\$0.00	\$421.59
Pomp Berger	Neutron 96	7	1232	1.71	6.02	3.64	761	61.8%	0.52	12.3	3.23	100.0%	14.3%	\$0.00	\$410.82
Bart Renkoski	6	6	1215	1.24	7.25	3.17	745	61.4%	0.48	11.8	3.11	66.7%	16.7%	\$5.50	\$407.51
Brian Hunt	G A R New Design A651	30	1153	1.63	6.44	3.65	695	60.3%	0.48	12.0	2.99	100.0%	43.3%	\$1.22	\$400.48
Pineview Farms	Black Grove Alliance 232	19	1127	1.71	8.24	2.64	705	62.5%	0.52	11.6	3.19	89.5%	36.8%	\$0.00	\$403.00
Ray Copeland Farm	Ironwood N D 701 9377	17	1233	1.37	7.31	3.30	761	61.8%	0.53	13.1	2.95	70.6%	11.8%	\$0.00	\$423.96
Davies Farms	D F LIBERTY PLUS L152	104	1183	1.68	7.31	3.32	728	61.6%	0.39	12.4	2.75	90.4%	44.2%	\$0.38	\$411.20
Eddie Bradley	Rto 2272 of Rita 9K2 RDA	6	1211	1.51	7.18	3.11	749	61.8%	0.51	12.3	3.01	83.3%	0.0%	\$7.41	\$410.99
Davis Angus Farm	DND	11	1070	1.14	6.95	3.15	659	61.6%	0.48	11.3	2.96	100.0%	72.7%	\$2.55	\$352.01
L.C. Curtis & Son, Inc.	Bridges Nugget 3133	7	1126	1.27	7.44	2.78	673	59.8%	0.49	12.0	2.97	100.0%	28.6%	\$4.09	\$395.04
Brian Hunt	WR	10	1171	1.71	7.87	3.06	722	61.7%	0.55	11.8	3.18	100.0%	10.0%	\$0.00	\$391.39
David Loutzenhiser	732	31	1133	1.65	6.70	3.15	700	61.9%	0.50	12.5	2.91	90.3%	32.3%	\$4.97	\$359.45
NW Georgia Research & Education Ctr.	Bricton Bando 2297	6	1216	2.08	7.68	3.23	756	62.1%	0.63	11.9	3.54	100.0%	0.0%	\$3.13	\$436.65
David L. Gardner	Echo Ridge Grid Maker 8002	13	1244	1.48	6.00	3.82	747	60.1%	0.34	13.0	2.51	69.2%	7.7%	\$1.15	\$397.88

Iowa Sire Profit Comparison Project Ranking of Sires with 5 or more Progeny



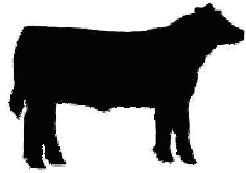
TCSCF
2006 Tri-County Steer Carcass Futurity Cooperative

In cooperation with



Tri-County Consignor or Bull Owner	Sire Name or ID Number	Progeny Number	Adj. Final Wt.	Ave. Disp. Score	Feed to Gain	Overall ADG	Hot Carcass			Ribeye Area	Yield Grade	% Low Choice or better	% Upper 2/3s Choice or better	Cost of Indiv. Health Trts.	SPA Calf Value
							Wt.	Dress %	Fat Cover						
Archie Davis	Davis Max 040A	10	1100	1.61	6.68	3.16	674	61.4%	0.52	11.3	3.18	100.0%	70.0%	\$0.00	\$328.54
Spring Creek Cattle Co.	Mill Coulee ZZZ 615	14	1138	1.46	7.66	3.25	697	61.3%	0.55	11.9	3.13	92.9%	28.6%	\$0.00	\$369.33
Ron Dunphy	106	16	1182	2.16	6.23	3.02	736	62.3%	0.28	13.1	2.26	31.3%	0.0%	\$31.01	\$353.29
Archie Davis	Davis Maximum 607	16	1186	1.56	6.59	3.51	738	62.2%	0.53	12.0	3.31	93.8%	75.0%	\$0.00	\$344.13
Rusty Thomson	23	15	1131	1.34	6.90	3.13	686	60.7%	0.45	12.0	2.85	86.7%	60.0%	\$5.77	\$377.05
Ed Weiderstein	2458	5	1139	1.25	6.12	3.74	673	59.2%	0.57	12.2	3.02	100.0%	60.0%	\$8.00	\$309.48
David Hayes	Toebben Spectrum 2058	14	1048	1.95	6.49	2.71	652	62.2%	0.40	12.0	2.58	92.9%	28.6%	\$11.33	\$357.97
L. C. Curtis & Son, Inc.	Bridges Executive 4045	10	1070	1.38	7.63	2.61	653	61.1%	0.52	11.9	2.94	80.0%	50.0%	\$12.41	\$382.04
Rocky Creek Farms/ William Womack	R C F Max X77 51B	22	1204	1.35	6.50	3.58	737	61.2%	0.41	12.2	2.92	81.8%	27.3%	\$5.09	\$361.91
Thomas Fulcher	S H A F Ext RR TRV 446	42	1187	1.66	6.90	3.53	734	61.9%	0.55	12.2	3.24	78.6%	16.7%	\$2.00	\$407.72
Thomas Fulcher	SHAF EXT Trav 6T6 038	40	1166	1.48	7.58	3.28	714	61.2%	0.60	12.2	3.27	87.5%	25.0%	\$0.62	\$420.62
Bentley East/McDonald	17	14	1299	1.33	7.32	3.13	791	60.9%	0.54	13.4	2.99	78.6%	7.1%	\$7.06	\$445.58
NW Georgia Research & Education Ctr.	Bricton Traveler 1221	9	1193	1.33	7.61	3.19	728	61.1%	0.59	12.6	3.14	66.7%	0.0%	\$0.00	\$440.63
Smalley Cattle Co.	Crutchfield Thunder	9	1271	1.35	6.99	3.48	780	61.3%	0.54	12.5	3.25	66.7%	11.1%	\$8.34	\$411.74
NW Georgia Research & Education Ctr.	Cpes Triple Threat 9601	25	1146	2.16	7.53	2.98	692	60.4%	0.48	11.9	2.92	76.0%	20.0%	\$0.48	\$423.81
Russ Massa	F36	9	1154	1.21	7.06	3.05	700	60.7%	0.47	12.2	2.88	66.7%	33.3%	\$0.00	\$413.82
Brian Hunt	Windy Hill Marksman	6	1193	1.97	6.69	3.50	728	61.1%	0.49	11.9	3.19	100.0%	50.0%	\$0.00	\$420.08
Oakalla Valley Partnership	S A F 013 Transform 8284	17	1091	1.82	7.17	2.73	672	61.6%	0.41	11.7	2.72	82.4%	0.0%	\$4.69	\$380.03
Oakalla Valley Partnership	Mill Coulee Rito Max 613	9	1089	1.45	7.41	2.61	670	61.5%	0.45	11.7	2.87	88.9%	33.3%	\$25.89	\$375.17
NW Georgia Research & Education Ctr.	Kahn Broadband R A 94L	11	1188	1.13	7.54	3.33	729	61.3%	0.63	12.1	3.43	72.7%	18.2%	\$0.00	\$412.09
Tom Merritt	M A F T C Traveler 658	11	1141	1.84	6.13	3.64	704	61.7%	0.58	12.5	3.25	81.8%	27.3%	\$0.00	\$356.09
Jeff Pepper	Stuart L B 901 007	7	1117	2.14	7.14	3.17	679	60.9%	0.52	12.2	2.93	100.0%	14.3%	\$10.59	\$373.16
Davis Angus Farm	DM40	9	1032	1.19	7.43	3.00	634	61.4%	0.53	11.1	3.16	100.0%	100.0%	\$1.33	\$340.86
Tim/Ron Dunphy	107	18	1239	1.76	6.55	3.17	765	61.8%	0.38	13.4	2.45	50.0%	0.0%	\$26.35	\$396.24
Bentley East/Beer	AN104	10	1275	1.64	7.13	3.23	772	60.6%	0.49	12.6	3.02	60.0%	20.0%	\$6.61	\$432.05
Oakalla Valley Partnership	S A F Diversity 9197	17	1152	1.35	6.85	2.93	704	61.1%	0.42	12.8	2.53	58.8%	0.0%	\$27.74	\$386.54
Warden & Richards	PAA PHARLAP A18	9	1112	2.09	6.89	3.43	689	61.9%	0.59	11.6	3.27	100.0%	33.3%	\$0.00	\$335.38
Payne Farm	Jarrell New Design 165L	5	1151	1.73	6.18	3.37	699	60.7%	0.42	12.2	2.80	100.0%	0.0%	\$0.00	\$348.80
Oakalla Valley Partnership	S A F Focus 8259	13	1125	1.58	7.58	2.96	694	61.6%	0.42	11.8	2.83	84.6%	15.4%	\$6.89	\$391.14
Thomas Fulcher	H G Traveler Ext 727	43	1171	1.47	7.06	3.33	718	61.4%	0.55	12.4	3.10	76.7%	25.6%	\$0.62	\$409.40
Rocky Creek Farms/ William Womack	R C F Plowman 8D	11	1231	1.24	6.49	3.52	753	61.3%	0.46	12.4	2.98	72.7%	27.3%	\$10.74	\$372.12
Voyles Farms, Inc.	H044L	7	1189	1.55	6.07	3.22	737	62.0%	0.44	13.2	2.59	57.1%	0.0%	\$34.86	\$363.47
Wagon Wheel Ranch/Fred Liebl	U G Rito Max 6589	14	1155	1.39	7.12	3.26	711	61.4%	0.53	11.6	3.23	57.1%	0.0%	\$2.09	\$380.77
Archie Davis	Davis H of C 207	16	1091	1.99	6.60	2.95	672	61.6%	0.46	12.1	2.74	93.8%	37.5%	\$0.00	\$338.88
Davis Angus Farm	DT25	10	1045	1.28	7.17	3.05	640	61.2%	0.48	11.1	3.00	100.0%	70.0%	\$4.80	\$337.21
Brian Hunt	Low Gap W W R Bullet 888	7	1244	1.69	6.01	3.88	756	60.7%	0.46	12.2	3.11	100.0%	0.0%	\$0.00	\$395.52
John Jennings	TY	6	1239	1.25	6.65	3.48	761	61.4%	0.49	12.2	3.16	66.7%	0.0%	\$0.00	\$381.22
Dennis Parrett	97	7	1254	1.60	6.69	3.25	775	61.9%	0.43	13.1	2.81	71.4%	0.0%	\$17.11	\$407.19
4R Cattle Co.	RTL	14	1078	1.74	7.81	2.60	663	61.5%	0.39	12.0	2.58	42.9%	7.1%	\$13.21	\$449.28
R. Schwalbe	RA	6	1204	NA	5.90	3.28	739	61.4%	0.33	13.4	2.28	50.0%	0.0%	\$12.00	\$336.98
Will Carrier	WAR Alliance 9126 6006	5	1262	1.20	6.53	3.72	761	60.4%	0.49	12.4	3.12	80.0%	20.0%	\$1.45	\$437.24
Archie Davis	Davis Bold Scotch 467	11	1300	1.70	6.62	3.64	787	60.6%	0.46	12.7	3.13	90.9%	63.6%	\$0.00	\$380.37
C. W. Hook	R/H New Design 7047	7	1194	1.43	6.61	3.38	739	61.9%	0.54	12.7	2.96	57.1%	0.0%	\$3.78	\$423.46
Ray Copelan Farm	BAF New Design 3033	7	1287	1.36	6.76	3.25	785	60.9%	0.46	13.6	2.69	42.9%	0.0%	\$0.00	\$439.26
Julian & Patti Price	T	12	1338	1.44	6.89	4.16	826	61.8%	0.55	13.2	3.22	58.3%	16.7%	\$0.00	\$444.80
Paul Ackley	WF	21	1155	1.77	6.66	3.29	712	61.6%	0.51	12.0	3.14	66.7%	14.3%	\$0.00	\$352.05
Kathleen Haddon	YON Right Time L217	10	1159	1.38	7.32	3.06	701	60.5%	0.43	12.0	2.83	80.0%	10.0%	\$0.00	\$389.90

Iowa Sire Profit Comparison Project Ranking of Sires with 5 or more Progeny



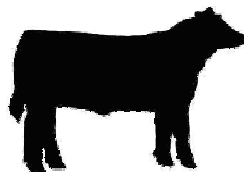
TCSCF
2006 Tri-County Steer Carcass Futurity Cooperative

In cooperation with



Tri-County Consignor or Bull Owner	Sire Name or ID Number	Progeny Number	Adj. Final Wt.	Ave. Disp. Score	Feed to Gain	Overall ADG	Hot Carcass			Ribeye Area	Yield Grade	% Low Choice or better	% Upper 2/3s Choice or better	Cost of Indiv. Health Trts.	SPA Calf Value
							Wt.	Dress %	Fat Cover						
Kathleen Haddon	Black Crest Consensus 72K	14	1116	1.56	7.08	3.11	669	59.9%	0.43	11.9	2.75	92.9%	21.4%	\$3.99	\$376.48
Ben Lindsey Farms	C F Timely 28	7	1096	2.04	7.45	2.99	674	61.6%	0.41	11.8	2.73	85.7%	14.3%	\$0.00	\$347.15
NW Georgia Research & Education Ctr.	O A F Right Time 017 5260	20	1174	1.63	7.42	3.17	715	60.9%	0.53	12.1	3.08	55.0%	5.0%	\$1.45	\$432.42
Brian Hunt	Sunup	11	1118	1.83	7.51	2.81	692	61.9%	0.44	12.6	2.60	45.5%	0.0%	\$11.16	\$435.29
Davis Angus Farm	BC	11	1054	1.14	6.79	3.21	636	60.4%	0.41	11.7	2.61	90.9%	36.4%	\$3.55	\$350.70
NW Georgia Research & Education Ctr.	Greenwood Precision L61	12	1109	1.67	6.95	3.38	685	61.7%	0.57	11.5	3.26	83.3%	0.0%	\$0.00	\$370.73
Wayne Williams	Bricton Traveler 9102	18	1208	2.00	7.00	3.17	742	61.4%	0.54	11.9	3.31	94.4%	16.7%	\$1.83	\$374.98
4R Cattle Co.	W11	17	1132	2.28	6.29	3.15	693	61.2%	0.34	12.6	2.35	64.7%	5.9%	\$7.50	\$354.06
Magnolia Hill Farm	M40	11	1214	1.95	6.23	3.51	743	61.2%	0.52	12.4	3.10	54.5%	0.0%	\$6.22	\$370.88
Gail & Marshall Miller	Nichols Ext M917	11	1093	1.58	7.76	2.93	663	60.7%	0.41	11.5	2.85	90.9%	18.2%	\$0.00	\$388.11
LC Curtis & Son	BAF Emulous 0142 2058 7072	8	1279	1.21	8.10	3.05	787	61.5%	0.63	12.3	3.63	100.0%	62.5%	\$0.00	\$427.79
Joe Griffith	W A F Rito 924 of 210	11	1187	1.36	6.26	3.19	733	61.7%	0.47	12.1	3.01	63.6%	27.3%	\$6.36	\$375.60
Davies Farms	D F DOCTOR LANE L155	5	1198	1.65	7.14	3.52	729	60.9%	0.39	12.6	2.71	100.0%	40.0%	\$0.00	\$408.38
NW Georgia Research & Education Ctr.	Ug Enhancer 9551	24	1067	1.58	6.78	3.08	651	61.0%	0.45	12.1	2.68	70.8%	20.8%	\$3.71	\$376.28
Webb Davis	WW	14	1067	1.24	7.46	2.98	649	60.8%	0.44	11.3	2.88	92.9%	21.4%	\$3.00	\$363.56
Hayes Farm	Bricton Mr Ferdinand 7010	14	1156	2.38	5.42	3.36	711	61.5%	0.48	12.0	3.07	100.0%	28.6%	\$0.00	\$345.60
NW Georgia Research & Education Ctr.	WAF 9M9 990	27	1116	1.77	7.71	2.84	690	61.9%	0.49	12.0	2.95	74.1%	3.7%	\$3.67	\$411.74
Dwight Watson	BoPat Extra 291	5	1155	1.80	6.08	3.36	709	61.5%	0.38	11.9	2.84	100.0%	20.0%	\$0.00	\$366.36
Pomp Berger	Phelps Crk	6	1179	1.40	6.19	3.19	724	61.4%	0.56	12.7	3.06	100.0%	33.3%	\$0.00	\$414.81
Eddie Bradley	Rito 2E82 of 7S11 Traveler	13	1139	1.95	7.68	2.74	704	61.9%	0.55	11.8	3.25	84.6%	23.1%	\$2.73	\$391.74
Brent Hanshaw	Nichols Performa K463	11	1109	1.96	7.28	3.06	672	60.6%	0.39	12.0	2.64	72.7%	9.1%	\$0.73	\$361.19
Rosenbaum Farms	2	16	1150	1.36	7.07	2.87	705	61.3%	0.42	12.1	2.84	68.8%	0.0%	\$25.36	\$408.48
Eddie Bradley	D W Bar EXT 013D	18	1122	1.45	7.14	2.86	685	61.1%	0.42	12.3	2.67	33.3%	0.0%	\$3.74	\$386.10
Nathan Mass	MF Supreme 325	9	1110	1.29	6.42	3.34	682	61.5%	0.57	12.1	3.12	66.7%	44.4%	\$1.67	\$310.52
Brian Hunt	Bullet	37	1143	1.64	7.32	3.21	699	61.2%	0.48	11.6	3.05	76.5%	17.6%	\$3.87	\$404.76
Tommy Jack Shoun	Freightliner	6	1125	2.07	6.93	3.62	680	60.5%	0.49	11.7	3.17	83.3%	50.0%	\$13.66	\$365.25
Larell Wilkinon	Ironwood Stampede 036 0355	5	1208	1.37	6.55	3.80	749	62.1%	0.60	11.7	3.62	100.0%	0.0%	\$0.00	\$387.46
NW Georgia Research & Education Ctr.	Cpes Schurrtop Supreme 9629	14	1101	1.32	7.54	3.04	664	60.4%	0.51	11.7	3.05	71.4%	21.4%	\$1.79	\$396.13
Brian Hunt	38 BULL	31	1108	1.89	7.29	3.12	677	61.0%	0.51	11.6	3.04	74.2%	16.1%	\$4.98	\$385.73
Doug Bunn	NS	5	1128	1.47	5.86	3.61	690	61.2%	0.40	12.9	2.42	40.0%	0.0%	\$0.00	\$379.91
Jeff Pepper	W841	19	1101	1.32	7.10	2.93	672	61.1%	0.49	12.3	2.84	84.2%	31.6%	\$17.88	\$365.50
Cherry Ridge Farms	Ug Rancher 8519 By 0541	7	1143	1.81	6.91	2.89	702	61.5%	0.47	11.1	3.22	71.4%	28.6%	\$2.67	\$352.26
Tim Dunphy	AI	8	1149	1.40	6.27	3.44	693	60.3%	0.52	12.2	3.04	100.0%	0.0%	\$6.09	\$373.28
Jeff Pepper	OO7	11	1131	1.27	6.91	3.35	686	60.7%	0.55	11.5	3.30	90.9%	45.5%	\$2.18	\$350.60
Harris Livestock	Meldon	46	1114	2.41	7.11	2.81	688	61.7%	0.43	12.3	2.68	67.4%	8.7%	\$4.37	\$371.26
Valley View Farms/Wesley & Delores Blankenship	S F Grand Canyon P0L of 74D4	7	1219	1.42	5.66	3.97	732	60.0%	0.51	12.6	3.02	71.4%	14.3%	\$4.16	\$383.01
Bar T Ranch	Yon Hi Spade 039 K74	8	1148	1.56	7.37	2.83	718	62.5%	0.43	12.4	2.88	50.0%	0.0%	\$13.33	\$385.25
Charles Rosenkrans	Wilt Dividend 109	20	1256	1.52	6.61	3.24	766	61.0%	0.41	12.6	2.82	45.0%	10.0%	\$11.35	\$412.16
Tim Savage	Pine Tree Thunder 7114	10	1100	1.72	6.38	2.99	663	60.3%	0.51	11.3	3.12	100.0%	30.0%	\$3.10	\$356.27
NW Georgia Research & Education Ctr.	K A F Rito 226	8	1060	1.41	6.83	3.26	639	60.3%	0.53	10.9	3.21	62.5%	50.0%	\$0.00	\$355.10
Multiple Owners	99	12	1172	1.83	6.61	3.09	717	61.3%	0.44	12.4	2.83	75.0%	25.0%	\$24.03	\$371.04
Ben Lindsey Farms	Double O Transformer 802	11	1137	1.61	7.72	3.17	696	61.3%	0.51	11.4	3.18	81.8%	0.0%	\$3.10	\$362.37
Archie Davis	Davis Gorthy of Graham 138	10	1182	1.58	6.97	3.10	715	60.6%	0.51	11.9	3.12	90.0%	20.0%	\$0.00	\$369.02
Lowell Andersen	L A Right Time 404	8	1146	2.22	7.53	2.76	714	62.3%	0.53	12.1	3.14	62.5%	0.0%	\$1.94	\$402.52
B.R. Haddon	4	5	1222	1.25	7.68	2.70	723	59.2%	0.44	11.8	2.99	80.0%	0.0%	\$32.26	\$419.38
Carl Tessmer	AO22N	10	1282	NA	6.65	3.49	777	60.4%	0.48	12.8	3.03	90.0%	10.0%	\$0.00	\$393.86
Charles Rosenkrans	Martin Summit Traveler 2005	10	1237	1.30	6.35	3.56	758	61.3%	0.39	12.4	2.95	60.0%	0.0%	\$1.90	\$385.37

Iowa Sire Profit Comparison Project Ranking of Sires with 5 or more Progeny



TCSCF

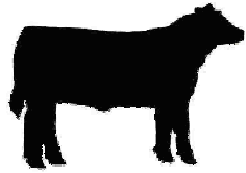
2006 Tri-County Steer Carcass Futurity Cooperative

In cooperation with



Tri-County Consignor or Bull Owner	Sire Name or ID Number	Progeny Number	Adj. Final Wt.	Ave. Disp. Score	Feed to Gain	Overall ADG	Hot Carcass			Ribeye Area	Yield Grade	% Low Choice or better	% Upper 2/3s Choice or better	Cost of Indiv. Health Trts.	SPA Calf Value
							Wt.	Dress %	Fat Cover						
L.C. Curtis & Son, Inc.	Bridges Resolution 7007	10	1115	1.45	7.82	2.72	687	61.6%	0.53	11.5	3.20	60.0%	30.0%	\$16.71	\$397.36
Lowell Andersen	Prairiedge Absolute 023	13	1210	1.77	6.75	3.10	741	61.2%	0.45	11.8	3.16	84.6%	15.4%	\$11.55	\$405.40
NW Georgia Research & Education Ctr.	Crestview Scotch Cap 9M9 833	10	1111	1.38	7.53	3.13	673	60.6%	0.59	11.7	3.32	90.0%	40.0%	\$2.60	\$389.13
Jeff Pepper	W A F Sleep Easy 841	17	1145	1.82	7.50	3.06	703	61.4%	0.57	12.4	3.05	58.8%	0.0%	\$10.39	\$390.74
NW Georgia Research & Education Ctr.	Crestview Prompter 123	7	1185	1.29	6.78	3.42	706	59.4%	0.49	12.2	2.92	42.9%	0.0%	\$0.00	\$408.92
McCord W Hall	N Bar Emulation EXT	6	1149	1.46	7.38	3.09	712	62.0%	0.44	11.8	3.00	83.3%	0.0%	\$0.00	\$360.09
Ron Dunphy	67	11	1127	1.77	6.14	3.04	686	60.8%	0.37	12.5	2.48	81.8%	27.3%	\$23.87	\$341.45
LaRell Wilkinson	13	5	1215	1.35	7.56	3.37	763	62.8%	0.58	11.7	3.55	100.0%	60.0%	\$0.00	\$424.48
LC Curtis & Son	M H B Oliver of Z 145	14	1141	1.09	7.67	2.89	707	61.9%	0.61	12.2	3.31	71.4%	21.4%	\$7.94	\$399.36
Brian Hunt	G A R Precision 7152	17	1230	1.73	5.79	3.81	758	61.6%	0.52	12.5	3.15	70.6%	17.6%	\$10.13	\$375.18
Brian Hunt	Byrego	24	1124	1.70	7.25	3.21	697	62.1%	0.58	11.9	3.30	91.7%	8.3%	\$0.14	\$368.38
L. C. Curtis & Son, Inc.	Ug Traveler 8180 8640	8	1037	1.18	7.75	2.50	618	59.6%	0.51	11.2	2.96	87.5%	37.5%	\$17.59	\$377.21
Jason Peters	P A A 3113 Northlander 0028	17	1060	1.98	7.50	2.79	643	60.6%	0.33	11.5	2.54	70.6%	0.0%	\$0.00	\$360.37
Croftburn Farm	B F Rito Classic 012 086	5	1079	2.02	8.08	2.71	679	62.9%	0.59	11.8	3.27	100.0%	0.0%	\$0.00	\$392.84
NW Georgia Research & Education Ctr.	102	8	1049	1.72	7.08	3.14	636	60.9%	0.53	11.6	3.00	50.0%	12.5%	\$0.00	\$370.25
Tom Merritt	B A F Ext 1187	7	1129	2.13	5.92	3.53	685	60.7%	0.50	11.9	3.07	71.4%	14.3%	\$0.00	\$340.88
Bruce Brae GA/RR Bruce	Daltons Explorer 026	13	1070	1.21	6.78	3.09	660	61.7%	0.45	11.2	2.90	69.2%	23.1%	\$21.56	\$335.65
Archie Ladd	Circle A Right Time 0476	6	1228	1.69	6.53	3.09	769	62.6%	0.46	13.4	2.76	16.7%	0.0%	\$2.19	\$383.92
Todd Dunphy	11	10	1144	2.10	6.37	2.90	672	58.7%	0.34	12.0	2.52	30.0%	0.0%	\$34.92	\$354.79
Pomp Berger	Nick	9	1155	1.65	7.11	3.16	713	61.7%	0.53	12.0	3.25	77.8%	22.2%	\$0.00	\$409.39
Holton Farms	Winns Bandolier 700	5	1102	1.50	8.35	2.61	676	61.3%	0.49	11.6	2.95	60.0%	0.0%	\$8.78	\$381.95
Ed Wiederstein	Circle Oak	6	1154	1.17	7.01	3.21	699	60.6%	0.59	11.4	3.58	100.0%	50.0%	\$8.86	\$394.46
Davis Angus Farm	K	6	979	1.25	7.92	2.76	599	61.1%	0.55	10.4	3.34	100.0%	50.0%	\$12.50	\$331.10
Steve James	U T P Bextor 2171	5	1157	1.20	6.26	3.43	704	60.9%	0.47	12.4	3.04	20.0%	0.0%	\$0.00	\$389.84
NW Georgia Research & Education Ctr.	Crestview Regal 931	6	1072	1.28	6.26	3.38	640	59.7%	0.51	11.4	3.08	16.7%	16.7%	\$4.07	\$340.25
Harris Livestock	Tex	14	1068	2.18	6.84	2.68	642	60.1%	0.37	11.7	2.55	21.4%	0.0%	\$3.06	\$345.39
Larry Griffin	44	5	1013	NA	7.34	2.73	637	62.9%	0.70	11.5	3.52	100.0%	20.0%	\$14.00	\$334.66
Red Angus Sires															
D.M. Pitts	LCC EBV 1160K	5	1243	1.58	6.31	3.52	759	61.0%	0.41	12.4	2.99	100.0%	100.0%	\$0.00	\$374.51
D.M. Pitts	BIEBER VIRILE 7038	8	1190	1.53	6.23	3.19	729	61.3%	0.39	13.2	2.49	87.5%	37.5%	\$0.00	\$376.06
Tim Smallwood	DBLR SALTADOR 1420	5	1297	1.55	6.10	3.72	792	61.1%	0.35	13.3	2.56	20.0%	0.0%	\$0.00	\$395.22
Robert Stauber	83	25	1171	1.29	7.61	2.73	728	62.2%	0.43	11.9	2.93	80.0%	16.0%	\$1.97	\$409.82
Paul Dunseth	269J	8	1106	2.29	6.29	3.02	683	61.7%	0.46	12.7	2.66	87.5%	25.0%	\$3.19	\$358.82
Lazy S Farm	LS MARIAS 325	6	1154	NA	6.51	3.29	709	61.4%	0.28	12.8	2.19	50.0%	0.0%	\$12.00	\$421.90
JanBil Farms	Rancher	5	1118	1.35	5.89	3.15	675	60.3%	0.37	13.1	2.29	80.0%	20.0%	\$15.71	\$327.00
Rocky Rush	ORYS TIGERS POWERHOUSE	7	1215	1.57	6.00	3.44	735	60.5%	0.22	13.0	2.19	14.3%	0.0%	\$0.00	\$399.59
Julian & Patti Price	J7	12	1322	1.55	6.90	4.08	805	60.9%	0.48	12.9	3.08	66.7%	8.3%	\$3.50	\$467.80
JanBil Farms	Chercan4912	11	1098	1.48	6.21	3.30	664	60.5%	0.40	12.4	2.56	100.0%	63.6%	\$1.17	\$333.97
JanBil Farms	LS067	23	1094	1.35	6.14	3.11	665	60.8%	0.39	12.2	2.57	91.3%	17.4%	\$9.87	\$322.59
Paul Ackley	HO	15	1119	1.53	6.82	3.07	684	61.2%	0.49	11.4	3.18	86.7%	26.7%	\$0.00	\$344.41
John Jennings	Y34	5	1237	1.45	6.56	3.31	753	60.9%	0.42	13.0	2.66	20.0%	0.0%	\$13.52	\$393.35
Shady Bower Farm	1007	9	1141	1.61	6.43	2.90	680	59.6%	0.35	12.0	2.56	22.2%	0.0%	\$45.80	\$372.99
Angus Cross Sires															
Kenagy & Co.	20	11	1288	1.86	6.61	3.21	806	62.6%	0.35	14.3	2.33	54.5%	0.0%	\$1.41	\$390.75
Jerry Graybeal	60	7	1237	1.89	5.87	3.56	776	62.8%	0.41	13.2	2.76	100.0%	28.6%	\$0.00	\$413.26
D. M. Pitts	108	11	1232	1.52	6.50	3.13	770	62.5%	0.35	13.7	2.31	72.7%	0.0%	\$10.19	\$385.26
W.L. Forest	Big Nick	9	1304	2.14	6.23	3.57	794	60.9%	0.38	12.8	2.80	55.6%	0.0%	\$0.00	\$383.67

Iowa Sire Profit Comparison Project Ranking of Sires with 5 or more Progeny



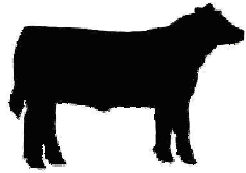
TCSCF
2006 Tri-County Steer Carcass Futurity Cooperative

In cooperation with



Tri-County Consignor or Bull Owner	Sire Name or ID Number	Progeny Number	Adj. Final Wt.	Ave. Disp. Score	Feed to Gain	Overall ADG	Hot Carcass			Ribeye Area	Yield Grade	% Low Choice or better	% Upper 2/3s Choice or better	Cost of Indiv. Health Trts.	SPA Calf Value
							Wt.	Dress %	Fat Cover						
Ron Penton	2H	14	1366	1.18	6.50	3.38	828	60.5%	0.35	13.9	2.52	50.0%	0.0%	\$26.96	\$418.71
D M Pitts	131	9	1118	1.37	6.95	2.86	698	62.4%	0.47	11.9	2.95	77.8%	11.1%	\$8.03	\$372.99
Jerry Graybeal	MA	16	1181	1.53	6.26	3.47	735	62.2%	0.51	12.5	3.06	62.5%	6.3%	\$2.35	\$412.22
Mi Tierra Cattle Co. LLC c/o Dale Eppard	4M	5	1185	1.95	6.10	3.08	734	62.0%	0.29	13.2	2.30	20.0%	0.0%	\$0.00	\$361.54
Mi Tierra Cattle Co. LLC c/o Dale Eppard	8060L	6	1185	1.46	6.49	2.95	724	61.1%	0.32	12.2	2.64	16.7%	0.0%	\$9.02	\$380.93
SimmAngus Sires															
Davies Farms	122	7	1231	1.56	6.73	3.47	763	62.1%	0.40	13.8	2.39	71.4%	14.3%	\$0.00	\$411.80
Davies Farms	DF 177M	21	1302	1.71	6.45	3.83	804	61.8%	0.50	13.7	2.92	95.2%	28.6%	\$0.76	\$417.63
Davies Farms	49K	20	1181	1.66	7.81	3.01	730	61.8%	0.41	12.5	2.71	95.0%	30.0%	\$0.00	\$410.03
Davies Farms	DF 165M	20	1230	2.02	6.37	3.67	755	61.4%	0.48	13.5	2.72	100.0%	35.0%	\$2.09	\$414.23
Russ Massa	M903SX	9	1289	1.40	6.83	3.31	807	62.6%	0.51	13.9	2.86	33.3%	11.1%	\$0.00	\$443.88
Davies Farms	DF 178M	58	1227	2.08	6.21	3.53	756	61.6%	0.43	13.5	2.56	93.1%	44.8%	\$0.52	\$386.14
Davies Farms	DF 1/4	17	1288	1.64	6.27	3.58	774	60.1%	0.42	13.8	2.51	100.0%	41.2%	\$2.27	\$393.84
Bobby Bell	SXL32	30	1215	1.73	6.25	3.54	747	61.4%	0.42	12.7	2.73	66.7%	3.3%	\$0.00	\$395.62
Davies Farms	SXL	140	1151	1.55	7.38	3.12	709	61.6%	0.38	12.9	2.48	90.0%	33.6%	\$0.00	\$406.70
Massa Ranch	M 920	8	1163	1.42	7.85	3.04	729	62.7%	0.34	12.2	2.69	37.5%	12.5%	\$0.00	\$407.26
Davies Farms	7L	20	1162	1.50	7.71	2.93	709	61.0%	0.36	12.8	2.43	70.0%	20.0%	\$0.00	\$413.10
Davies Farms	SX	160	1159	1.84	7.46	3.15	712	61.5%	0.39	12.7	2.61	83.8%	29.4%	\$0.00	\$413.03
Rosenbaum Farms	Larry	6	1062	1.00	6.59	3.04	653	61.5%	0.49	12.2	2.76	66.7%	0.0%	\$13.16	\$373.19
Balancer Sire															
Smith Farm	758391	5	1245	1.20	7.06	3.04	799	64.2%	0.49	13.1	3.17	60.0%	0.0%	\$7.80	\$452.80
Beefmaster Sires															
B.R. Haddon	G622	12	1066	1.34	7.66	2.49	653	61.3%	0.43	11.3	2.88	41.7%	0.0%	\$24.44	\$376.19
B.R. Haddon	227	8	1122	1.45	7.33	2.69	690	61.4%	0.39	12.1	2.64	0.0%	0.0%	\$6.03	\$377.74
Brangus Sires															
Bar T Ranch	706776	5	1293	1.83	7.94	2.82	802	62.0%	0.49	13.8	2.82	60.0%	0.0%	\$0.00	\$456.20
Choestoea Farm, Inc.	MSBN	34	1162	1.83	7.54	2.91	730	62.8%	0.47	12.5	2.95	58.8%	11.8%	\$0.00	\$409.08
Dubose Cattle Co	M217	10	1242	2.01	8.12	2.89	784	63.1%	0.48	12.5	3.09	20.0%	0.0%	\$0.00	\$479.69
Dubose Cattle Co	N312	7	1216	2.06	7.87	2.96	761	62.6%	0.56	13.1	3.06	14.3%	0.0%	\$0.00	\$459.43
Joe Davis	L106	19	1124	1.97	7.43	2.96	680	60.5%	0.47	11.9	2.90	78.9%	10.5%	\$4.37	\$400.38
Joe Davis	M236	10	1050	2.09	7.44	2.72	644	61.3%	0.54	11.5	3.12	70.0%	20.0%	\$0.00	\$360.18
Smalley Cattle Co.	Smitty	10	1249	1.68	7.05	3.28	778	62.2%	0.46	13.0	2.94	30.0%	0.0%	\$3.12	\$418.10
Dubose Cattle Co.	M207	12	1080	2.16	8.30	2.40	672	62.2%	0.56	12.0	3.07	50.0%	0.0%	\$0.00	\$423.39
Charolais Sires															
Forrest & Donna Thompson	#20	5	1351	1.37	6.56	3.56	831	61.6%	0.28	14.0	2.25	80.0%	20.0%	\$0.00	\$411.04
Bart Renkoski	ACE MR UNLTD G81 P	8	1340	1.43	5.80	3.93	825	61.6%	0.35	14.8	2.26	62.5%	0.0%	\$0.00	\$384.34
NW Georgia Research & Education Ctr.	WCR PRIME TIME 908 P	17	1282	1.20	5.70	3.91	780	60.9%	0.39	13.5	2.54	76.5%	5.9%	\$9.14	\$394.79
Charles Marti	15	5	1316	1.32	6.42	3.36	813	61.8%	0.29	14.1	2.20	20.0%	0.0%	\$9.23	\$411.47
MBS Charolais	T150	7	1274	2.26	7.36	2.87	811	63.6%	0.32	14.4	2.16	14.3%	0.0%	\$0.00	\$431.91
NW Georgia Research & Education Ctr.	SKYMONT EASE 2078	15	1296	1.42	5.78	3.94	791	61.0%	0.44	13.5	2.71	60.0%	0.0%	\$0.00	\$398.40
NW Georgia Research & Education Ctr.	RC MONTANA 644 POLLED	9	1263	1.11	5.85	3.67	780	61.8%	0.40	13.4	2.59	66.7%	11.1%	\$0.00	\$403.24
NW Georgia Research & Education Ctr.	SCHURRTOP BONANZA PLD	10	1217	1.17	5.70	3.60	753	61.9%	0.36	13.6	2.37	70.0%	0.0%	\$0.00	\$388.76
NW Georgia Research & Education Ctr.	SCHURRTOP-DC INTIMIDATOR	15	1232	1.20	5.81	3.63	761	61.8%	0.40	13.3	2.58	66.7%	6.7%	\$0.89	\$392.95
William St. John	322	5	1271	1.93	5.91	3.52	787	61.9%	0.39	13.6	2.54	40.0%	0.0%	\$0.00	\$417.17
Joan Liebrecht	FEMO	22	1222	1.99	8.14	2.79	759	62.2%	0.29	12.8	2.44	68.2%	9.1%	\$2.81	\$442.52
Archie Davis	CH	13	1162	1.63	6.51	2.96	712	61.3%	0.32	13.2	2.20	92.3%	23.1%	\$0.00	\$354.24

Iowa Sire Profit Comparison Project Ranking of Sires with 5 or more Progeny



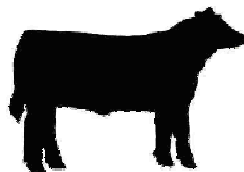
TCSCF
2006 Tri-County Steer Carcass Futurity Cooperative

In cooperation with



Tri-County Consignor or Bull Owner	Sire Name or ID Number	Progeny Number	Adj. Final Wt.	Ave. Disp. Score	Feed to Gain	Overall ADG	Hot Carcass			Ribeye Area	Yield Grade	% Low Choice or better	% Upper 2/3s Choice or better	Cost of Indiv. Health Trts.	SPA Calf Value
							Wt.	Dress %	Fat Cover						
Harris Livestock	Collins	16	1199	1.40	5.97	3.37	743	61.9%	0.39	12.7	2.65	75.0%	12.5%	\$2.23	\$326.44
Joan Liebrecht	313	7	1218	1.32	7.98	2.96	757	62.2%	0.32	12.4	2.61	42.9%	28.6%	\$0.00	\$431.12
NW Georgia Research & Education Ctr.	LHD PRODUCTIVE G1308 ET	11	1258	1.18	5.79	3.75	779	61.9%	0.42	13.7	2.57	18.2%	0.0%	\$2.11	\$396.01
Tommy Jack Shoun	VPI PRIME DUKE 2114	37	1216	3.19	7.19	3.53	750	61.7%	0.41	12.2	3.07	89.2%	32.4%	\$14.36	\$402.24
NW Georgia Research & Education Ctr.	BALDRIDGE CADILLAC 74E	11	1229	1.24	5.95	3.46	764	62.1%	0.45	13.6	2.57	36.4%	0.0%	\$1.70	\$403.98
Lewis Farms	3336	6	1148	1.88	7.22	2.70	696	60.8%	0.37	12.9	2.35	83.3%	0.0%	\$0.00	\$398.29
Harmon Charolais	WCR SIR PRIME TIME 2140P	5	1353	1.25	6.85	3.09	833	61.6%	0.40	14.5	2.46	0.0%	0.0%	\$0.00	\$429.76
Breezy Heights Charolais	SCF CUJO	7	1147	2.04	5.37	3.24	696	60.7%	0.31	13.2	2.20	57.1%	0.0%	\$2.80	\$338.09
NW Georgia Research & Education Ctr.	NWMSU PLD UNLIMITED 233	9	1152	1.37	6.14	3.18	716	62.2%	0.49	13.1	2.72	66.7%	0.0%	\$2.46	\$390.48
NW Georgia Research & Education Ctr.	SKYMONT EASE 3001	12	1194	1.11	6.01	3.38	727	60.8%	0.44	12.7	2.75	58.3%	0.0%	\$0.00	\$394.05
NW Georgia Research & Education Ctr.	BBCR SIR MAC 112 P/S	11	1204	1.03	6.22	3.31	746	62.0%	0.47	12.6	2.92	36.4%	0.0%	\$0.00	\$403.51
Rocky Rush	759953	5	1157	1.60	6.17	2.93	718	62.1%	0.34	14.0	2.09	0.0%	0.0%	\$6.61	\$368.74
Harmon Charolais	AC JUMBO DUKE 907	8	1143	1.59	6.16	2.66	705	61.7%	0.17	12.7	2.00	0.0%	0.0%	\$50.89	\$377.70
Harmon Charolais	HC GENERATOR 346	5	1178	2.00	6.24	3.02	722	61.3%	0.35	13.6	2.25	0.0%	0.0%	\$14.39	\$361.54
Stabilizer Sire															
JanBil Farms	Stabilizer	6	1148	1.26	6.62	3.28	706	61.4%	0.46	11.8	3.08	83.3%	83.3%	\$0.00	\$344.41
South Devon Cross Sire															
Joe & Judi Jones	69A	21	1159	1.28	6.37	3.02	724	62.4%	0.36	13.0	2.49	100.0%	52.4%	\$1.91	\$387.81
Gelbvieh Sires															
Joe & Judi Jones	N67	7	1257	1.33	6.41	3.53	786	62.6%	0.34	13.5	2.50	57.1%	14.3%	\$0.00	\$387.62
Jack McCauley	10	5	1179	2.00	6.84	3.12	733	62.2%	0.39	13.0	2.59	80.0%	0.0%	\$0.00	\$378.27
C W Senn	B57	15	1202	1.61	7.12	2.96	735	61.2%	0.33	13.8	2.17	66.7%	13.3%	\$1.73	\$419.50
Gay Muse	STF STITCHES 24L	5	1247	2.33	6.73	3.17	765	61.3%	0.30	13.0	2.40	80.0%	0.0%	\$10.64	\$438.94
Bar T Ranch	DANNY	5	1258	1.33	7.39	2.77	779	62.0%	0.39	12.3	2.89	60.0%	0.0%	\$3.80	\$456.64
Gary Goostree	TOP MR BOUNCER K317	5	1240	1.92	6.20	3.19	776	62.6%	0.30	14.0	2.18	42.9%	14.3%	\$0.00	\$387.99
Beer	GV56	7	1298	1.87	7.03	3.28	797	61.4%	0.51	13.3	2.95	85.7%	28.6%	\$3.95	\$424.92
Joe & Judi Jones	121	5	1189	1.55	6.54	3.27	733	61.7%	0.41	12.9	2.63	60.0%	40.0%	\$0.00	\$382.63
Ron Dunphy	106	19	1234	1.76	6.13	3.40	753	61.0%	0.33	13.5	2.25	42.1%	5.3%	\$9.10	\$385.41
Fulcher Family Farms	CHM MORRIS G56	7	1128	1.60	5.97	3.23	691	61.2%	0.34	12.8	2.40	85.7%	0.0%	\$9.00	\$395.94
McDonald	13	12	1285	1.51	7.01	3.19	793	61.7%	0.41	13.9	2.49	50.0%	8.3%	\$0.58	\$450.82
Thomas Fulcher	CHM MORRIS G56	31	1186	1.61	7.46	3.11	738	62.2%	0.49	13.4	2.69	54.8%	16.1%	\$1.06	\$429.13
Ron Dunphy	89	18	1182	1.66	6.20	3.09	738	62.5%	0.31	14.2	1.98	38.9%	0.0%	\$10.74	\$380.32
Joan Liebrecht	BG	6	1229	1.85	8.15	2.89	764	62.1%	0.33	12.5	2.61	50.0%	0.0%	\$0.00	\$450.11
Todd Dunphy	13	12	1151	1.47	6.12	2.99	706	61.3%	0.31	12.5	2.40	66.7%	16.7%	\$42.64	\$339.73
Gary Martens	84H	5	1188	1.20	5.65	3.36	719	60.4%	0.29	12.3	2.53	60.0%	0.0%	\$2.86	\$359.38
Ron Dunphy	105	21	1151	1.39	6.26	3.05	711	61.8%	0.34	13.0	2.29	47.6%	0.0%	\$23.27	\$368.09
50%South Ozarks Premier Beef Marketers, LLC	51K	5	1292	2.40	6.33	3.26	811	62.8%	0.34	13.2	2.69	40.0%	0.0%	\$0.00	\$430.17
Stonegate Farm	WPC EXTRA 849H	25	1253	1.43	6.57	3.32	768	61.2%	0.38	13.0	2.68	48.0%	0.0%	\$2.78	\$389.47
Todd Dunphy	10	9	1165	1.94	6.31	2.87	719	61.7%	0.33	13.0	2.33	44.4%	0.0%	\$32.89	\$349.89
Allen Beer	56	5	1142	1.68	7.33	2.99	689	60.4%	0.44	12.1	2.79	60.0%	0.0%	\$8.95	\$407.81
50%South Ozarks Premier Beef Marketers, LLC	Lil G	5	1293	1.77	6.18	3.36	803	62.1%	0.34	14.5	2.29	20.0%	0.0%	\$0.00	\$453.48
Tim Dunphy	ECHO	5	1166	1.67	6.45	2.99	701	60.1%	0.37	12.8	2.42	40.0%	0.0%	\$28.86	\$370.92
Thomson Farm	55	6	1162	2.22	7.58	2.74	707	61.0%	0.39	12.8	2.55	33.3%	0.0%	\$0.00	\$416.80
Rusty Thomson	25	6	1212	2.00	6.97	3.01	739	61.1%	0.25	14.2	1.77	16.7%	0.0%	\$6.06	\$440.53
Gelbvieh Cross Sire															
Joe & Judi Jones	37A	19	1121	1.55	6.79	3.24	694	62.0%	0.34	12.4	2.47	94.7%	31.6%	\$3.24	\$367.92

Iowa Sire Profit Comparison Project Ranking of Sires with 5 or more Progeny



TCSCF

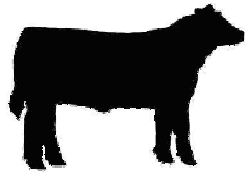
2006 Tri-County Steer Carcass Futurity Cooperative

In cooperation with



Tri-County Consignor or Bull Owner	Sire Name or ID Number	Progeny Number	Adj. Final Wt.	Ave. Disp. Score	Feed to Gain	Overall ADG	Hot Carcass Wt.	Dress %	Fat Cover	Ribeye Area	Yield Grade	% Low Choice or better	% Upper 2/3s Choice or better	Cost of Indiv. Health Trts.	SPA Calf Value
Hereford Sires															
Forrest Polled Hereford	K58	8	1211	1.07	7.61	3.00	736	60.8%	0.52	12.2	3.13	100.0%	37.5%	\$4.25	\$431.91
Jim McClure	SHR F6 MR SAUTEE 19J	8	1120	1.73	8.33	2.88	692	61.8%	0.52	11.4	3.19	100.0%	62.5%	\$0.00	\$387.37
Julian & Patti Price	K69	6	1375	1.13	6.18	4.06	844	61.4%	0.59	13.0	3.51	50.0%	33.3%	\$0.00	\$459.33
NW GA Research & Ed Ctr	C821	6	1156	1.29	6.98	3.09	717	62.1%	0.49	13.1	2.79	83.3%	16.7%	\$5.89	\$396.02
Julian & Patti Price	454	7	1356	1.58	7.15	4.10	843	62.2%	0.60	13.5	3.31	85.7%	14.3%	\$0.00	\$458.78
Magnolia Hill Farm	M60	14	1194	1.93	6.22	3.33	725	60.8%	0.48	12.2	2.99	85.7%	7.1%	\$4.21	\$363.31
Maple Springs Farm	9H	9	1242	1.27	6.71	3.54	747	60.1%	0.57	12.2	3.30	88.9%	22.2%	\$0.00	\$395.94
Dave Spark	057J	5	1029	1.32	6.83	2.93	614	59.7%	0.52	10.2	3.30	80.0%	40.0%	\$17.33	\$290.77
Innisfail Farm	INNISFAIL 235 12L	8	1256	1.16	7.84	3.03	751	59.8%	0.50	12.1	3.14	100.0%	37.5%	\$12.59	\$409.07
Stonegate Farm	P41140930	10	1286	1.16	6.85	3.51	797	62.0%	0.56	12.8	3.37	70.0%	0.0%	\$7.07	\$397.49
Magnolia Hill Farm	LH06	5	1125	2.28	6.23	3.34	694	61.7%	0.59	12.3	3.04	60.0%	0.0%	\$19.04	\$358.99
Forrest Polled Hereford	8044	5	1157	1.13	7.12	3.06	692	59.8%	0.44	11.9	2.84	60.0%	0.0%	\$13.00	\$421.96
Maple Springs Farm	K67	17	1168	1.23	6.87	3.24	712	60.9%	0.56	11.8	3.30	88.2%	23.5%	\$0.00	\$383.86
NW Georgia Research & Education Ctr.	HH295	8	1182	1.38	6.95	3.24	716	60.6%	0.48	12.0	3.03	75.0%	0.0%	\$28.31	\$388.65
NW Georgia Research & Education Ctr.	28HH0712	5	1202	1.05	7.10	3.27	741	61.8%	0.49	12.1	3.12	0.0%	0.0%	\$8.71	\$399.88
Bar T Ranch	FPH HITTER 4007 L61	6	1189	1.17	7.56	2.95	734	61.7%	0.52	12.2	3.11	33.3%	16.7%	\$11.74	\$407.51
Matthew Jones Farm	CES VICTOR 4009 X240	14	1151	1.58	7.45	2.77	696	60.4%	0.48	11.8	3.02	64.3%	28.6%	\$1.00	\$387.83
Dave Spark	991	9	1029	1.53	7.33	2.72	621	60.3%	0.64	10.8	3.40	66.7%	0.0%	\$26.68	\$307.02
Limousin Sires															
Oscar T. Cook, Jr.	UGAL 908J	7	1504	1.24	5.22	4.51	922	61.3%	0.43	15.7	2.48	28.6%	0.0%	\$0.00	\$451.17
Gretsch Farms	JKCF FLOYD	21	1195	2.08	6.46	3.46	746	62.4%	0.44	13.3	2.66	61.9%	23.8%	\$6.09	\$372.59
MaineAngus Sire															
Kenagy & Co.	20	11	1288	1.86	6.61	3.21	806	62.6%	0.35	14.3	2.33	54.5%	0.0%	\$1.41	\$390.75
Salers Sires															
Ridgetop Salers	Apo	5	1333	1.35	6.59	3.51	822	61.7%	0.38	14.6	2.26	100.0%	20.0%	\$0.00	\$405.43
Donald Dunseth	SALERS 295E	7	1332	1.96	6.54	2.97	831	62.4%	0.18	14.3	1.96	28.6%	0.0%	\$4.74	\$430.87
Ridgetop Salers	31J	5	1025	1.42	6.51	2.77	626	61.1%	0.25	11.9	2.00	0.0%	0.0%	\$6.14	\$330.92
SalersAngus Sires															
Mi Tierra Cattle Co. LLC c/o Dale Eppard	4M	5	1185	1.95	6.10	3.08	734	62.0%	0.29	13.2	2.30	20.0%	0.0%	\$0.00	\$361.54
Mi Tierra Cattle Co. LLC c/o Dale Eppard	8060L	6	1185	1.46	6.49	2.95	724	61.1%	0.32	12.2	2.64	16.7%	0.0%	\$9.02	\$380.93
Shorthorn Sires															
Karl Kenagy	SSC CLYDE	5	1294	1.25	6.18	3.56	820	63.4%	0.43	13.3	2.88	60.0%	0.0%	\$5.60	\$377.59
Tom Enarson	Brilliant	7	1200	1.27	6.41	3.23	747	62.1%	0.24	13.7	2.02	14.3%	0.0%	\$0.71	\$397.22
Simmental Sires															
Tennessee Tech Univ.	129	5	1269	1.42	6.83	3.19	789	62.2%	0.27	14.0	2.04	100.0%	20.0%	\$0.00	\$413.79
Dean McKibben	M32	6	1239	1.99	7.51	3.34	776	62.5%	0.35	13.5	2.48	83.3%	0.0%	\$0.00	\$414.17
McCord W Hall	GW LUCKY STRIKE 147G	8	1293	1.17	7.02	3.44	801	61.9%	0.39	13.7	2.55	100.0%	12.5%	\$0.00	\$410.49
Prairie View Farms	Sure Trade	5	1364	1.85	5.71	3.83	850	62.3%	0.29	15.2	1.98	40.0%	20.0%	\$5.41	\$372.27
Davies Farms	ONE EYE JACK	18	1240	1.36	6.94	3.68	765	61.7%	0.37	13.5	2.48	100.0%	72.2%	\$0.00	\$410.47
Davies Farms	STOCKMAN	7	1251	2.00	6.20	3.96	782	62.5%	0.48	14.4	2.59	85.7%	42.9%	\$0.00	\$433.55
Eddie Bradley	NICHOLS LEGACY G151	15	1245	1.49	6.56	3.55	772	62.0%	0.48	13.4	2.74	86.7%	26.7%	\$0.00	\$411.10
Joe & Judi Jones	56	15	1105	1.26	7.14	3.25	683	61.8%	0.41	11.8	2.81	93.3%	33.3%	\$1.48	\$367.96
JanBil Farms	Jalapena	5	1145	1.58	6.49	3.12	725	63.2%	0.30	12.2	2.57	100.0%	80.0%	\$0.00	\$347.13
Davies Farms	TE IRISH STOCKMAN H3	75	1235	1.71	7.44	3.41	763	61.8%	0.38	13.0	2.61	91.9%	29.7%	\$0.17	\$428.95
Stephen Turner	Legacy	17	1213	1.64	6.54	3.45	740	61.0%	0.28	13.6	2.05	58.8%	0.0%	\$4.62	\$377.42

Iowa Sire Profit Comparison Project Ranking of Sires with 5 or more Progeny



TCSCF

2006 Tri-County Steer Carcass Futurity Cooperative

In cooperation with



Tri-County Consignor or Bull Owner	Sire Name or ID Number	Progeny Number	Adj. Final Wt.	Ave. Disp. Score	Feed to Gain	Overall ADG	Hot Carcass			Ribeye Area	Yield Grade	% Low Choice or better	% Upper 2/3s Choice or better	Cost of Indiv. Health Trts.	SPA Calf Value
							Wt.	Dress %	Fat Cover						
Bill Davidson	HC LUCKY 91L	8	1236	2.00	5.15	3.92	779	63.0%	0.34	14.8	2.04	12.5%	0.0%	\$2.25	\$384.27
Raymond Rogers	989	6	1268	NA	6.38	3.37	790	62.4%	0.43	13.7	2.67	100.0%	0.0%	\$0.00	\$385.19
Raymond Rogers	Wally	7	1303	NA	6.02	3.66	796	61.0%	0.37	13.9	2.43	85.7%	14.3%	\$0.00	\$372.79
Rosenbaum Farms	21	10	1134	1.33	6.53	3.07	693	61.1%	0.31	12.4	2.45	100.0%	14.3%	\$17.22	\$389.74
Jerry Graybeal	#3 Dale	6	1214	1.67	6.22	3.47	755	62.2%	0.34	12.9	2.62	100.0%	0.0%	\$0.00	\$388.79
Davies Farms	MD MISTER DIAMOND	22	1215	1.75	7.48	3.06	736	60.6%	0.30	12.8	2.34	86.4%	13.6%	\$0.00	\$396.36
Rosenbaum Farms	JDJ	19	1112	1.39	6.56	3.02	688	61.9%	0.39	12.6	2.57	84.2%	31.6%	\$17.67	\$382.20
Raymond Rogers	67	10	1217	NA	6.22	3.33	763	62.7%	0.43	13.2	2.72	100.0%	20.0%	\$4.40	\$351.33
Raymond Rogers	K-20	5	1379	NA	6.02	3.75	850	61.6%	0.44	15.2	2.47	60.0%	0.0%	\$15.80	\$389.10
John & Janet Massey	PVF H90	8	1325	1.32	7.06	3.30	806	60.9%	0.42	13.0	2.84	50.0%	12.5%	\$0.00	\$423.20
William E. Heser	Bond	21	1128	1.57	6.44	2.92	697	61.7%	0.40	12.9	2.44	57.1%	4.8%	\$9.99	\$348.25
Eddie Bradley	CCR CADILLAC	10	1270	1.63	7.13	3.49	794	62.5%	0.60	12.9	3.31	40.0%	0.0%	\$0.98	\$444.30
JanBil Farms	Big Sky	6	1139	1.38	6.01	3.33	682	59.9%	0.35	12.9	2.40	100.0%	50.0%	\$10.80	\$344.81
Davies Farms	HHS JOURNEYMAN J18	7	1335	1.67	6.84	4.00	830	62.1%	0.45	13.2	3.01	71.4%	14.3%	\$0.00	\$413.55
Warden Thomas	WilliamsS	10	1218	2.03	6.62	3.17	758	62.3%	0.36	13.6	2.32	30.0%	0.0%	\$13.54	\$419.12
John Bauer	J68	5	1155	2.12	7.83	3.04	716	62.0%	0.37	12.3	2.69	60.0%	20.0%	\$0.00	\$398.01
Bobby Lance	H-HS JACOB	5	1237	1.32	5.87	3.46	746	60.3%	0.33	12.6	2.52	60.0%	0.0%	\$5.60	\$371.92
Wallace Campbell/Deer Creek Farm	Jackpot	15	1150	1.34	5.38	3.42	699	60.7%	0.33	13.3	2.14	86.7%	6.7%	\$9.28	\$373.11
Justin Wallick	23	8	1186	1.20	6.72	2.96	735	62.0%	0.46	12.6	2.97	87.5%	12.5%	\$14.75	\$384.50
William E. Heser	Clif	14	1072	1.37	6.08	2.92	643	59.9%	0.32	12.2	2.21	78.6%	7.1%	\$25.83	\$331.29
Emerald J Farms	JNA GUNS BLACK ASSASSIN	6	1254	1.17	7.09	3.09	762	60.6%	0.33	13.3	2.35	33.3%	0.0%	\$10.42	\$402.62
Bar-C Farm / W. Max Campbell	421	6	1381	1.59	6.47	3.65	863	62.5%	0.47	13.3	3.16	50.0%	0.0%	\$0.00	\$430.13
John Jennings	W24	7	1214	1.75	6.21	3.29	730	60.1%	0.24	12.9	2.09	28.6%	0.0%	\$4.43	\$385.31
Marty Bunton	G270	5	1093	1.85	6.62	3.07	658	60.2%	0.38	11.9	2.54	60.0%	0.0%	\$0.00	\$351.52
John & Janet Massey	BBSF FROZEN ASSETS	5	1331	1.57	5.94	3.89	808	60.7%	0.33	14.0	2.31	0.0%	0.0%	\$0.00	\$434.52
Mike & Trish Huffman	BDV IVOMEK	12	1153	1.49	5.21	3.44	697	60.3%	0.26	13.9	1.70	25.0%	0.0%	\$12.68	\$322.61
Sean & Lynn Parker	DORA LEE RED KNIGHT	6	1058	1.54	5.63	2.73	640	60.6%	0.27	12.8	1.87	33.3%	0.0%	\$5.08	\$331.17
Tarentaise Sires															
Leonard Sheriff	203995	10	1240	1.68	6.90	3.25	764	61.6%	0.32	13.2	2.36	30.0%	0.0%	\$0.00	\$405.06
Seven Lakes Tarentaise	G2	8	1287	1.19	5.21	3.64	791	61.4%	0.37	13.8	2.40	62.5%	12.5%	\$0.00	\$391.46
Seven Lakes Tarentaise	208433	5	1193	3.00	6.30	3.41	743	62.3%	0.28	13.6	2.05	0.0%	0.0%	\$31.47	\$384.68
Seven Lakes Tarentaise	208547	8	1197	2.50	5.89	3.55	729	60.9%	0.23	13.3	1.98	12.5%	12.5%	\$22.23	\$373.38
Seven Lakes Tarentaise	206130	9	1152	2.34	6.31	3.03	715	62.1%	0.31	13.5	2.07	22.2%	0.0%	\$13.36	\$374.60
Ankina Sire															
Brent Hanshaw	ANK463	8	1157	1.53	6.98	3.00	695	60.0%	0.48	11.9	2.92	37.5%	0.0%	\$0.00	\$400.55
All Sire Average			1190	1.58	6.78	3.27	732	61.5%	0.45	12.6	2.83	74.3%	22.2%	\$5.17	\$390.72
Award Bulls Averages			1203	1.52	6.64	3.45	741	61.6%	0.43	12.8	2.75	88.9%	38.3%	\$3.50	\$389.48